

South Texas College
Board of Trustees
Facilities Committee
Ann Richards Administration Building, Board Room
Pecan Campus
Thursday March 19, 2015
@ 4:30 PM
McAllen, Texas

"At anytime during the course of this meeting, the Board of Trustees may retire to Executive Session under Texas Government Code 551.071(2) to confer with its legal counsel on any subject matter on this agenda in which the duty of the attorney to the Board of Trustees under the Texas Disciplinary Rules of Professional Conduct of the State Bar of Texas clearly conflicts with Chapter 551 of the Texas Government Code. Further, at anytime during the course of this meeting, the Board of Trustees may retire to Executive Session to deliberate on any subject slated for discussion at this meeting, as may be permitted under one or more of the exceptions to the Open Meetings Act set forth in Title 5, Subtitle A, Chapter 551, Subchapter D of the Texas Government Code."

I.	Approval of February 5, 2015 Facilities Committee Meeting Minutes	1-10
II.	Update on Status of 2013 Bond Construction Program	11-16
III.	Update and Discussion on Additional Services with Project Architects for Specialty Design Consultants for the 2013 Bond Construction Program	17
IV.	Review and Recommend Action on Mechanical and Civil Engineering Fees for the 2013 Bond Construction Program.....	18-20
V.	Discussion and Action as Necessary on Consideration of Construction of New Library Building for the Pecan Campus	21-31
VI.	Review and Recommend Action on Proposed Facility Lease Agreement with McAllen Chamber of Commerce Creative Incubator.....	32
VII.	Review and Recommend Action on Contracting Architectural Design Services for the Technology Campus Building B Main Door and Frame Replacement and Building C Conference Room	33-35
VIII.	Review and Recommend Action on Contracting MEP Design Services for the Starr County Campus Building E Data Center Generator.....	36
IX.	Review and Recommend Action on Pool of Firms for Civil Engineering Services	37-43
X.	Review and Recommend Action on Contracting Construction Services for the Pecan Campus Student Support Services Building Second Floor Re-carpeting	44-46
XI.	Review and Recommend Action on Contracting Construction Services for Technology Campus West Academic Building Re-roofing.....	47-50
XII.	Review and Recommend Action on Substantial Completion of the Pecan Campus Ann Richards Administration Building Grants/Accountability Office Improvements	51-52

XIII.	Discussion and Action as Necessary Regarding STC vs Chubb Insurance for Hail Damage Claim Settlement.....	53
XIV.	Update on Status of Non-Bond Construction Projects	54-59

Approval of February 5, 2015 Facilities Committee Meeting Minutes

The Minutes for the Facilities Committee Meeting of February 5, 2015 are presented for Committee approval.

**South Texas College
Board of Trustees
Facilities Committee
Ann Richards Administration Building, Board Room
Pecan Campus
Thursday, February 5, 2015
@ 4:30 PM
McAllen, Texas**

MINUTES

The Facilities Committee Meeting was held on Thursday, February 5, 2015 in the Ann Richards Administration Building Board Room at the Pecan Campus in McAllen, Texas. The meeting commenced at 4:31 p.m. with Mr. Gary Gurwitz presiding.

Members present: Mr. Gary Gurwitz, Dr. Alejo Salinas, Jr., Mr. Paul R. Rodriguez, Ms. Rose Benavidez, Mrs. Graciela Farias, and Mr. Jesse Villarreal

Members absent: Mr. Roy de León

Also present: Dr. Shirley A. Reed, Mr. Chuy Ramirez, Mrs. Mary Elizondo, Mr. Gerry Rodriguez, Mr. George McCaleb, Mr. Cody Gregg, Mr. Ricardo de la Garza, Mr. Gilbert Gallegos, Mr. Rolando Garcia, Ms. Diana Bravos, Mr. Richard Seitz, Ms. Kelley Heller-Vela, and Mr. Andrew Fish

Approval of January 15, 2015 Facilities Committee Meeting Minutes

Upon a motion by Mrs. Graciela Farias and a second by Mr. Jesse Villarreal, the Minutes for the Facilities Committee Meeting of January 15, 2015 were approved as written. The motion carried.

Update on Status of 2013 Bond Construction Program

Gilbert Gallegos with Broaddus & Associates provided a presentation on the status of the 2013 Bond Construction Program. This item was provided for review and discussion with the Committee and there was no action requested.

Review and Discussion on 2013 Bond Construction Program Management Responsibilities Matrix

As part of their Construction Program Management scope of services, Broaddus & Associates provided a matrix outlining the communication protocol, levels of responsibilities, and level of approval for Broaddus & Associates, STC staff, Administration, and Board of Trustees. Broaddus & Associates proposes to use this matrix in order to maintain an organized and consistent system of communication, review, and authorization throughout the duration of the Bond Program.

A similar matrix and protocol was successfully used during the 2001 Bond Program. Establishing consensus by the responsible parties will develop clear direction as the Bond Program moves forward. It is the intent by Broaddus & Associates to review the proposed matrix with the Facilities Committee and note any changes and/or additions requested by the Committee prior to finalizing.

The Committee asked for clarification of South Texas College staff's role in the 2013 Bond Construction Program. It was clarified that Broaddus & Associates is responsible to the Board for oversight of the 2013 Bond Construction Program. South Texas College staff will work with Broaddus & Associates to facilitate the transfer of operations and maintenance and to coordinate other deliverables, but Broaddus & Associates serves as Project Manager for the duration of the 2013 Bond Construction Program.

Broaddus & Associates reviewed a proposed matrix with the Facilities Committee on February 5, 2015. In the proposed matrix included in the Facilities Committee packet, Broaddus & Associates indicated that the Color Board and Finishes of the 2013 Bond Construction Program projects would be reviewed by the CPM and approved by Staff, with no oversight by the Board of Trustees.

Mr. Gary Gurwitz stipulated that the Board should have final review and approval of the Color Board and Finishes, and Mr. Gilbert Gallegos agreed. The version of the matrix incorporated into a PowerPoint presentation by Mr. Gallegos had already been revised to require Facilities Committee review and recommendation and Board approval of the Color Board and Finishes, and this would be included in the presentation for Board approval.

Gilbert Gallegos from Broaddus & Associates attended the February 5, 2015 Board Facilities Committee meeting to review the responsibilities matrix with the Committee and responded to questions and comments. No action was requested.

Review and Recommend Action on Request for Construction Manager-at-Risk Proposals for the 2013 Bond Construction Program

Approval of the Request for Proposals for Construction Manager-at-Risk for the 2013 Bond Construction Program will be requested at the February 24, 2015 Board meeting. Broaddus & Associates prepared the Request for Proposals for Construction Manager-at-Risk services to be used for STC's 2013 Bond Construction Program. This RFP was prepared with the assistance of South Texas College Staff and legal counsel. A draft of the proposed Request for Proposals for Construction Manager-at-Risk was included in the packet for the Committee's review.

Some Bond projects might not require the Construction Manager-at-Risk procurement method and therefore the more typical Competitive Sealed Proposals procurement method would be used. In the cases where the Competitive Sealed Proposals method was used, STC's standard AIA Owner/Contractor agreement would be used.

With Board approval of the proposed Request for Proposals, Broaddus & Associates and STC staff would prepare for solicitation of proposals in March 2015, including a copy of the proposed contract. Gilbert Gallegos from Broaddus & Associates attended the February 5, 2015 Board Facilities Committee meeting to review the request for proposals and address questions by the Committee.

Upon a motion by Mr. Gary Gurwitz and a second by Mrs. Graciela Farias, the Facilities Committee recommended Board approval of the Request for Proposals for Construction Manager-at-Risk for the 2013 Bond Construction Program, substantially in the form presented. The motion carried.

Review and Recommend Action on Standard Contract for Construction Manager-at-Risk for the 2013 Bond Construction Program

Approval of the Standard Contract for Construction Manager-at-Risk for the 2013 Bond Construction Program will be requested at the February 24, 2015 Board meeting.

Broaddus & Associates prepared the standard contract for Construction Manager-at-Risk services to be used for STC's 2013 Bond Construction Program. This RFP was prepared with the assistance of South Texas College Staff and legal counsel. Broaddus & Associates has assisted STC staff and STC legal counsel with preparation of a standard contract for Construction Manager-at-Risk services to be used for STC's 2013 Bond Construction Program. The proposed contract is designed to be used when the College has employed the services of a Construction Program Manager and the Construction Manager-at-Risk.

A draft of the proposed standard contract for Construction Manager-at-Risk is attached for the Committee's review. The contract has been developed to identify the Owner's and Contractor's responsibilities when the construction program includes the use of a Construction Program Manager and a Construction Manager-at-Risk as the general contractor.

Some Bond projects may not require the Construction Manager-at-Risk procurement method and therefore the more typical Competitive Sealed Proposals procurement method could be used. In the cases where the Competitive Sealed Proposals method is used, STC's standard AIA Owner/Contractor agreement can be used.

With Board approval of the proposed standard contract for Construction Manager-at-Risk, Broaddus & Associates and STC staff can prepare for solicitation of proposals in March 2015. A representative from Broaddus & Associates attended the February 5, 2015 Board Facilities Committee meeting to review the proposed contract with the Committee.

Legal Counsel confirmed that he was satisfied with the contract, and recommended Board approval of the contract at the February 24, 2015 Regular Board Meeting.

Upon a motion by Mr. Gary Gurwitz and a second by Ms. Rose Benavidez, the Facilities Committee recommended Board approval of the proposed Standard Contract for Construction Manager-at-Risk for the 2013 Bond Construction Program, substantially in the form presented. The motion carried.

Review and Recommend Action on Negotiated Architect Fees for the 2013 Bond Construction Program Projects

Approval of the negotiated architect fees for the 2013 Bond Construction Program will be requested at the February 24, 2015 Board meeting.

Broaddus & Associates staff completed fee negotiations with the architect firms which were previously approved for the 2013 Bond Construction Program projects. The packet included a list of projects and associated fees negotiated with each architect firm, except for those projects previously identified as "priority projects" and approved by the Board in preceding months.

Mr. Gilbert Gallegos from Broaddus & Associates was present at the February 5, 2015 Board Facilities Committee meeting to review the proposed fees for each project.

Mr. Gallegos announced that all but one firm had accepted the first proposed fee, based upon prior Board approval for the priority projects.

One firm, Mata-Garcia Architects, started negotiations above the Board-approved Architect Fee Schedule and shortly before the Committee meeting had accepted a fee

set at the ceiling of the Board-approved Architect Fee Schedule. The justification for this fee rate was based upon the required travel for their design team to project sites, and Broaddus & Associates recommended Board approval of this.

The Committee asked for information regarding the negotiation process, and neither Mr. Gallegos nor the other project managers from Broaddus & Associates were able to provide documentation of the process, including starting fees and the negotiations toward the final recommended fees.

The Committee took no formal action on the proposed architect fees as negotiated by Broaddus & Associates, requesting that the firm bring documentation of the negotiation process to the full Board of Trustees for review and consideration.

Review and Recommend Action on Standard Engineering Contract for the 2013 Bond Construction Program

Approval of the standard engineering contract for the 2013 Bond Construction Program will be requested at the February 24, 2015 Board meeting.

Broaddus & Associates recommended use of a proposed engineering contract for STC's 2013 Bond Construction Program, based on the architect's contract previously approved. The committee packet included a copy of the recommended contract.

Legal counsel and Broaddus & Associates recommended approval to proceed with the proposed contract to be used when mechanical and civil engineering services are required. Legal counsel and Gilbert Gallegos from Broaddus & Associates attended the February 5, 2015 Board Facilities Committee meeting to review the proposed contract and support their recommendation to the Committee.

Upon a motion by Mr. Gary Gurwitz and a second by Ms. Rose Benavidez, the Facilities Committee recommended Board approval of the standard engineering contract for the 2013 Bond Construction Program as presented. The motion carried.

Review and Recommend Action on Geotechnical Engineering and Materials Testing Services

Approval of a pool of firms to provide geotechnical engineering and materials testing services as needed for Bond and Non-bond projects will be requested at the February 24, 2015 Board meeting.

The current approval of geotechnical engineering and materials testing services expired on February 18, 2015. It was recommended that a minimum of three (3) firms be approved

for a period beginning February 24, 2015 through February 23, 2016 with the option to renew for two one-year periods.

On November 24, 2014, a Request for Qualifications (RFQ) for solicitation of these services was made available and responses were received on December 16, 2014. A total of six (6) firms submitted responses to the RFQ. The evaluation team prepared the attached summary of scoring and ranking for review by the Facilities Committee.

The results of the qualifications scoring and ranking were forwarded to Broaddus & Associates for review and comment as these services related to the Bond construction projects. Mr. Gilbert Gallegos informed STC staff that they concurred with the firms and the number of firms recommended.

The Facilities Committee noted that the solicitation for these services was for non-bond construction. Legal Counsel concurred, and advised that the Committee and the Board should limit action to approval of firms for non-bond construction projects at this time and require a separate solicitation for any 2013 Bond Construction Program projects.

Satisfied that the RFQ process and development of a pool of geotechnical engineering and materials testing services firms was compliant with procurement code, legal counsel recommended Board approval to accept the top three ranked firms for such a pool, specifically for non-bond projects.

Upon selection and approval by the Board of Trustees, the firms would be available to provide the College with geotechnical engineering and materials testing services as needed for non-bond projects. Staff would recommend use of firms for Non-bond projects. Some of the anticipated engineering services which may be provided are as follows:

- Testing of soil conditions for proper foundation design
- Testing of select fill dirt for proper compaction
- Testing of concrete samples during concrete pours
- Testing of sub-grades, caliche base, and asphalt for parking areas
- Testing of structural steel reinforcing
- Testing of steel welding
- Testing of floors for levelness
- Testing of fireproof materials
- Testing of environmental conditions including air quality
- Testing for identifying asbestos type materials

Fees for these services could range from \$5,000 to \$45,000 depending on the scope and complexity of each construction project. As part of the fee negotiations process, each firm will be asked to provide unit costs for a standard list of possible services. These unit costs will be used a basis for each future project fee proposal.

Upon a motion by Mr. Gary Gurwitz and a second by Mr. Roy de León, the Facilities Committee recommended Board approval of a pool consisting of the top three (3) ranked firms, alphabetically listed as Millennium Engineers Group, Inc; Raba-Kistner Consultants, Inc.; and Terracon Consultants, Inc., to provide geotechnical engineering and materials testing services as needed for district-wide non-bond projects for the period beginning February 24, 2015 through February 23, 2016 with the option to renew for two one-year periods.

Review and Recommend Action on HVAC Testing and Balancing Engineering Services

The Committee did not discuss that item and no action was taken.

Review and Recommend Action on Contracting Construction Services for the Pecan Campus South Academic Building Science Lab Exhaust Fan

Approval to select a contractor for the Pecan Campus South Academic Building Science Lab Exhaust Fan project will be requested at the February 24, 2015 Board meeting.

During FY 2013-2014, a physics lab in the South Academic Building was converted into a biology lab. After construction was completed, it was determined that the lab did not include a code required exhaust fan for proper ventilation. The project engineer failed to include an exhaust fan as required by code. This discovery was addressed with EGV Architects and their consultant mechanical engineer, Trinity Engineering. The design team agreed to provide the necessary plans and specifications for the required exhaust fan, at no additional cost to the college. Once completed, the plans and specifications were used to solicit construction proposals.

EGV Architects assisted STC staff in preparing issuing the necessary plans and specifications for the solicitation of competitive sealed proposals. Solicitation of competitive sealed proposals for this project began on January 7, 2015. A total of six (6) sets of construction documents were issued to general contractors, sub-contractors, and suppliers and a total of four (4) proposals were received on January 15, 2015.

Timeline for Solicitation of Competitive Sealed Proposals	
January 7, 2015	Solicitation of competitive sealed proposals began.
January 15, 2015	Four (4) proposals were received.

Staff evaluated these proposals and prepared a proposal summary in the Committee packet. It was recommended that the top ranked contractor be recommended for Board approval.

Funds were available in the FY 2014-2015 Construction budget for this project.

Source of Funding	Available Funds	Highest Ranked Proposal
Non-Bond Construction	\$25,000	\$23,300

Upon a motion by Mr. Gary Gurwitz and a second by Mr. Jesse Villarreal, the Facilities Committee recommended Board approval to contract construction services with Holchemont, Inc. in the amount of \$23,300.00 for the Pecan Campus South Academic Building Science Lab Exhaust Fan project as presented.

Review and Recommend Action on Final Completion of the Following Projects

Approval of final completion and release of final payment for the following projects will be requested at the February 24, 2015 Board meeting:

	Projects	Substantial Completion	Final Completion	Documents Attached
1.	Pecan Campus Student Support Services Building Office Modifications	Previously Approved	Recommended	Final Completion Letter
2.	Pecan Plaza Renovation for Continuing Education Additional Classrooms and Cashiering Space	Previously Approved	Recommended	Final Completion Letter
3.	Pecan Plaza Space Renovation for Police Department	Previously Approved	Recommended	Final Completion Letter

Due to time constraints, the Facilities Committee did not discuss or take action on this item, and asked staff to present the item directly to the Board of Trustees.

Executive Session:

The South Texas College Board Facilities Committee convened into Executive Session at 5:33 p.m. in accordance with Chapter 551 of the Texas Government Code for the specific purpose provided in:

- Section 551.071, Consultations with Attorney

Open Session:

The South Texas College Board Facilities Committee returned to Open Session at 5:44 p.m. No action was taken in Executive Session.

Discussion and Action as Necessary Regarding STC vs Chubb Insurance for Hail Damage Claim Settlement

The Facilities Committee was asked to discuss with legal counsel and recommend action as necessary regarding legal settlement with Chubb Insurance for Hail Storm Damage insurance claim. Any recommended action would be presented for consideration by the South Texas College Board of Trustees at the February 24, 2015 Regular Board Meeting.

The Facilities Committee took no action on this item.

Update on Status of Non-Bond Construction Projects

The Facilities Planning & Construction staff prepared the attached design and construction update. This update summarized the status of each capital improvement project currently in progress. Gerry Rodriguez will be present to respond to questions and address concerns of the committee.

Adjournment

There being no further business to discuss, the Facilities Committee Meeting of the South Texas College Board of Trustees adjourned at 5:45 p.m.

I certify that the foregoing are the true and correct minutes of the February 5th, 2015 Facilities Committee Meeting of the South Texas College Board of Trustees.

Mr. Gary Gurwitz, Chair

Update on Status of 2013 Bond Construction Program

Attached is a copy of the presentation prepared by Broaddus & Associates as an update on the status of the 2013 Bond Construction Program. A representative from Broaddus & Associates will be present at the March 19, 2015 Board Facilities Committee meeting to provide the update.

BOARD APPROVAL ITEMS

South Texas College
2013 Bond Construction Program
Upcoming Timeline – 02/24/15

January '15 February '15 March '15 April '15 May '15

	January '15	February '15	March '15	April '15	May '15
Board Approval					
1	Master Schedule	Update (No Action)	Update (No Action)	Update (No Action)	Update (No Action)
2	Standard Architect Contract	Construction Manager at Risk - Contract	Negotiated Thermal Engineering Fees	Construction Manager at Risk Selection	
3	Engineer Fee Schedule	Construction Manager at Risk - RFP	Negotiated Civil Engineering Fees	Geotechnical Test & Air Balance Recommendation	
4		Construction Program Management Responsibility Matrix	Centralized & Consolidation of Specialty Consultants	BIM Facilities Management	
5		Standard Engineering Contract			
6		Negotiated Balance of Architect Fees			
7					
8					
9					
10					

OPERATIONAL ITEMS

**South Texas College
2013 Bond Construction Program
Upcoming Timeline**

January '15 February '15 March '15 April '15 May '15

	January '15	February '15	March '15	April '15	May '15
1	AV/IT Additional Service Requisition (ASR) Executed	Notice To Proceed - Priority Projects Only	Technical Evaluation of Construction Manager at Risk Proposals	Update Master Program Schedule	
2	Preliminary Budget Forecast	Kick - Off Session for Priority Projects	Geotechnical Test & Air Balance RFQ Evaluations		
3		Furniture Program Review & Discussion	Owner In-site Training		
4		Facilities Design Standards & Guidelines Review Completion			
5					
6					
7					
8					
9					
10					
Operational					

INFORMATION & PRESENTATION ITEMS

South Texas College
2013 Bond Construction Program
Upcoming Timeline

	January '15	February '15	March '15	April '15	May '15
1				Mass Purchasing/Volume Procurement Strategies	Construction Builder's Risk
2				Construction Management @ Risk Process	Owner Controlled Insurance Program
3					Tax Credit Opportunity
4					
5					
6					
7					
8					
9					
10					
Informational/Presentations					

2013 BOND CONSTRUCTION PROGRAM PROGRESS REPORT - March 6, 2015

Project Number	PROJECT DESCRIPTION	Project Development				Design Phase				Price Proposals		Construction Phase					Architect/Engineer	Contractor
		Project Development	Board approval of A/E	Contract Negotiations	Schematic Approval	30%	60%	95%	100%	B&A Review	Board Approval	30%	50%	75%	95% Substantial Comp	100%		
Pecan Campus																		
	North Academic Building																PBK Architects	
	South Academic Building																BSA Architects	
	STEM Building																BSA Architects	
	Student Activities Building and Cafeteria																Warren Group Architects	
	Thermal Plant Expansion																Half Associates	
	Parking and Site Improvements																PCE	
Mid Valley Campus																		
	Health Professions and Science Building																ROFA Architects	
	Workforce Training Center Expansion																EGV Architects	
	Library Expansion																Mala + Garcia Architects	
	Student Services Building Expansion																ROFA Architects	
	Thermal Plant																DBR Engineering	
	Parking and Site Improvements																Half Associates	
Technology Campus																		
	Southwest Building Renovation																EGV Architects	
	Parking and Site Improvements																Hinojosa Engineering	
Nursing and Allied Health Campus																		
	Campus Expansion																ERO Architects	
	Parking and Site Improvements																R. Gutierrez Engineers	
Starr County Campus																		
	Health Professions and Science Building																Mala + Garcia Architects	
	Workforce Training Center Expansion																EGV Architects	
	Library																Mala + Garcia Architects	
	Student Services Building Expansion																Mala + Garcia Architects	
	Student Activities Building Expansion																Mala + Garcia Architects	
	Thermal Plant																Sigma HN Engineers	
	Parking and Site Improvements																Melden & Hunt Engineering	
Regional Center for Public Safety Excellence - Pharr																		
	Training Facility																TBD	
	Parking and Site Improvements																TBD	
STC La Joya Teaching Site (Jimmy Carter ECHS)																		
	Training Labs Improvements																EGV Architects	

Update and Discussion on Additional Services with Project Architects for Specialty Design Consultants for the 2013 Bond Construction Program

Specialized sub-consultants will be necessary to assist with design of specialty spaces for buildings which contain unique or highly technical spaces. These specialized design services have been identified as additional services in the approved contracts for each architect. Therefore, each architect will be instructed to provide an additional services proposal when specialized services are required. These proposals will be reviewed by Broaddus & Associates and presented to the Board with a recommendation for approval.

Below is a list of specialized design services which will be needed as part of the 2013 Bond Construction Program.

- Technology, audio visual and telecommunications infrastructure and systems – previously approved as additional services with Broaddus & Associates
- Libraries – Additional services with architects
- Kitchens and dining spaces - Additional services with architects
- Nursing simulation training Labs - Additional services with architects

A representative from Broaddus & Associates will be present at the March 19, 2015 Board Facilities Committee meeting to review the additional services required

Review and Recommend Action on Mechanical and Civil Engineering Fees for the 2013 Bond Construction Program

Approval of the negotiated mechanical and civil engineering fees for the 2013 Bond Construction Program will be requested at the March 31, 2015 Board meeting.

Broaddus & Associates staff has completed fee negotiations with all engineering firms which were previously approved for the 2013 Bond Construction Program projects. Attached is a list of projects and associated fees negotiated with each firm. A representative from Broaddus & Associates will be present at the March 19, 2015 Board Facilities Committee meeting to review the proposed fees for each project.

It is requested that the Facilities Committee recommend for Board approval at the March 31, 2015 Board meeting, the proposed mechanical and civil engineering fees for the 2013 Bond Construction Program as presented.

**STC THERMAL PLANT
ENGINEERING FEE NEGOTIATION**

Project		1	2	3	Final Fee	Scheduled Fee
Pecan Campus Thermal Plant	B&A		7.17%	7.52%	7.52%	7.73%
\$4,300,000			\$308,310	\$323,360	\$323,360	\$332,390
Halff Associates	MEP Eng.	7.87%	7.53%	0.00%	0.00%	
		\$338,000	\$323,790	\$0	\$0	
Mid-Valley Thermal Plant	B&A		0.00%	0.00%	7.00%	7.87%
\$3,800,000			\$0	\$0	\$266,000	\$299,060
DBR Engineering	MEP Eng.	7.00%	0.00%	0.00%	0.00%	
		\$266,000	\$0	\$0	\$0	
Starr County Thermal Plant	B&A		7.17%	7.66%	7.66%	7.87%
\$3,800,000			\$272,460	\$291,080	\$291,080	\$299,060
Sigma Engineering	MEP Eng.	9.30%	7.86%	7.80%		
		\$353,400	\$298,680	\$296,400		

**STC
CIVIL ENGINEERING FEE NEGOTIATION**

	Project		1	2	3	Final Fee	Scheduled Fee
1	Technology Campus Site Imp \$650,000	B&A		9.00%	9.05%	9.05%	9.20%
	Hinojosa Engineering	Civil Eng.	9.25%	9.10%	0.00%		
			\$60,125	\$59,150	\$0	\$58,825	\$59,800
2	Nursing & Allied Health Site \$1,100,000	B&A		8.64%	0.00%	8.64%	8.75%
	R. Gutierrez Engineering	Civil Eng.	8.94%	0.00%	0.00%		
			\$98,340	\$0	\$0	\$95,040	\$96,250
3	Mid Valley Parking & Site In \$2,000,000	B&A		8.45%	8.50%	8.50%	8.65%
	Half Associates	Civil Eng.	8.75%	8.58%	0.00%		
			\$175,000	\$171,600	\$0	\$170,000	\$173,000
4	Starr Co. Parking & Site Imp \$1,000,000	B&A		8.25%	0.00%	8.25%	8.75%
	Melden & Hunt Eng.	Civil Eng.	9.00%	0.00%	0.00%		
			\$90,000	\$0	\$0	\$82,500	\$87,500
5	Pecan Parking & Site Impr. \$2,000,000	B&A	8.15%	0.00%	0.00%	8.15%	8.65%
	PCE Engineers	Civil Eng.	8.15%	0.00%	0.00%		
			\$163,000.00	\$0	\$0	\$163,000	\$173,000
			\$163,000	\$0	\$0		

Proposed Additional Services Requested per Contract Article 4 "Additional Services": Surveying

	Engineering Firm	Surveying
1	Hinojosa Engineering	\$10,000
2	R. Gutierrez Engineering	\$9,431
3	Half Associates	\$10,000
4	Melden & Hunt Engineering	\$6,500
5	PCE Engineers	\$10,000

Discussion and Action as Necessary on Consideration of Construction of New Library Building for the Pecan Campus

The need for a new library building on the Pecan Campus is a priority facility need. While a new library was eliminated from the 2013 Bond Program, the need remains for a new building on the Pecan Campus.

Boultinghouse Simpson Gates Architects are ready to begin design of the South Academic building located at the main entrance to the Pecan Campus while this is the preferred location for a new library. Administration asks the Facilities Committee to consider the following:

1. Support construction of a new 100,000 square foot library to be funded from Plant Fund Revenue;
2. Switch the locations of the South Academic Building and the location of the future library; and
3. Let the new library be the signature building for the Pecan Campus.

Need for Library Space on Pecan Campus

Administration recently evaluated future facility needs for the Pecan campus and determined that the highest priority and concern is the need for a new larger library. Boultinghouse Simpson Gates Architects previously determined that the present library would be difficult and costly to expand. Even if the present library could be expanded, it would have to be vacated in order to complete the renovation. Therefore, it is recommended that a new building be built in order to maintain library operations in the existing building until a new building is ready - no disruption. The existing library could then be retrofitted for new classrooms and computer labs or could serve as a location for student services functions.

The 2013 Bond Construction Program did not include the library even though it was a high priority. The library was eliminated from the projects included in the 2013 Bond in an effort to reduce the total amount of the bond. The proposed new library was included in the Master Plan; however, it was scaled back and then placed on the list of second level priorities.

A new library is being built in Starr County, the Mid Valley Campus library will double in size, and the Nursing Campus will have a new library.

Adequate library space on the Pecan Campus is equally important. The attached *New Pecan Campus Library Talking Points* outline the need and justification for the new facility.

Master Plan Information

The District-Wide Campus Expansion Master Plan developed by Freese and Nichols in 2010 identified the following space/construction needs:

Library, Center for Learning Excellence and Information Commons

- a. New Library stacks, CLE and Information Commons space – 100,500 GSF

Retrofitting of Existing Library into Classroom and Offices

- a. Renovate existing library building for classroom use and faculty offices.

The current Master Plan completed in 2010 identified the need for a 100,000 square foot library for the Pecan Campus to serve the number of students attending that campus. The current Library has a total of 67,000 square feet and no room for future growth. As part of their master plan development for the Pecan Campus, Freese and Nichols, Inc. recommended the construction of a new 100,000 square foot library building.

Options for Location of a New Library on Pecan Campus

The Master Plan recommendation included possible locations on the Pecan Campus for the construction of a new library Building. The library could be located at any of the four new facility locations on the Pecan Campus South Side.

Staff has reviewed the possible locations and recommends switching the locations of the South Academic Building with the location of the future Library, as approved by the Board on May 27, 2014, for the following reasons:

- Centrally located for most beneficial access
- Creates a focal point at the Campus entrance which enhances the “*heart of the campus*” image
- A north facing entrance would capitalize on the environmental conditions and permit greater use of glass in the design
- Location would be appropriate for a four story structure

Parking Options for Location of New Library

Following in the packet are three options for providing additional parking if the committee agrees to the consideration of a new library for the Pecan Campus

Estimated Cost

- Estimated construction costs for a four story 100,000 to 140,000 square foot building would be 17 to 18 million dollars; not including soft costs such as design, furniture, fixture and technology equipment. With the soft costs, total project cost would be approximately 21 million dollars.

Other Considerations

- The construction management could be negotiated and added to Broaddus & Associates' contract.
- An architect would need to be selected for this specific project.

It is requested that the Facilities Committee review the information presented and recommend action as necessary for approval at the March 31, 2015 Board meeting to authorize construction of a new library building on the Pecan Campus, to be located on the site designated for the South Academic Building and to be funded with Plant Funds Revenue.

New Pecan Library Talking Points

3/4/2015

1. STC Libraries are evolving toward a Learning Commons model of service.

Recent changes in pedagogy (primarily an emphasis on collaborative learning and multimedia projects) and the ongoing shift to electronic books and databases have forced libraries to reconfigure their space by incorporating large numbers of computer workstations, group work areas, flexible and configurable furniture, and additional support services such as technological help and tutoring.

The Pecan Campus library has reached the limit of these types of modifications. While it has met the need in the past, the current library space was not designed with these functions in mind, and a new library that integrates space for support services, additional computer workstations, collaborative study, individual study, research, and library instruction is sorely needed.

a. **A new library at the Pecan Campus will provide the College with an opportunity to align spaces for current and future requirements.**

- Students need different environments within a library ranging from active group work areas to quiet study areas. A new multi-story library would enable the Library Services to manage noise throughout the library by assigning noise level zones on different floors thereby meeting conflicting student needs and reducing noise related complaints from users.
- A new library at the Pecan campus would enable the College to effectively plan and implement a learning commons environment bringing diverse student learning services into the same area to provide students with a seamless learning experience.
- Library Services working with Facilities Planning & Construction, could layout adjacencies in the new library space that conform with current and anticipated library use.

2. **Student feedback has shown that the Pecan Campus library design no longer accommodates the needs of today's students.**

- a. The 2014 library quality survey (LIBQUAL+) identified "Library as Place" as the dimension of library service quality with the greatest gap between what students would like to see and what they perceive (superiority mean = **-0.40**). Specifically, the categories with the greatest gap were "Quiet Space for Individual Activities" (superiority mean = **-0.76**) followed by "Library space that inspires study and learning" (superiority mean = **-0.47**).
- b. The 2012 library quality survey (LIBQUAL+) identified "Library as Place" as the dimension of library service quality with the greatest gap between what students would like to see and what they perceive (superiority mean = **-0.33**). Specifically, the categories with the greatest gap were "Quiet Space for Individual Activities" (superiority

mean = **-0.50**) followed by “Library space that inspires study and learning” (superiority mean = **-0.40**).

- c. Between the 2012 and 2014 administrations of the LIBQUAL survey, **the gap between students’ desired and perceived levels of service has increased approximately 21%** (from a superiority mean of -33 to -40).

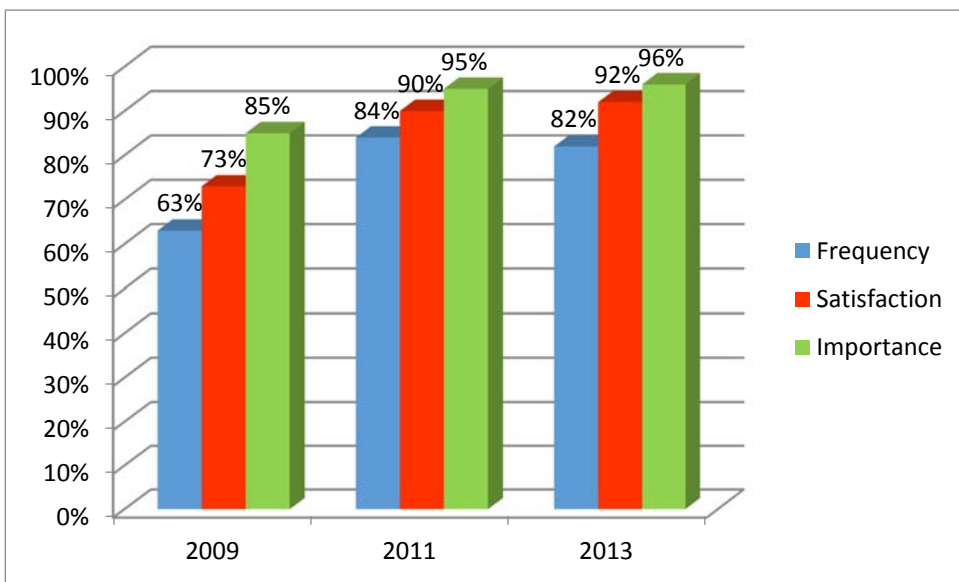
3. Student Feedback on Computers

In a qualitative study conducted by the Office of Research and Analytical Services in 2010, students reported that computers, group stations, and related services play a vital role in their ability to gather information to complete assignments and projects at the library.

- a. Students from the Pecan and Mid-Valley campuses reported that morning hours are usually the hardest times to find a computers or group station available. “What I think, what I have noticed, is that there is not enough computers....every time I come it’s full. “
- b. Students reported satisfaction with group stations and declared: “But they do need more of those because there are a lot of groups that go especially during the finals or like mid-terms and there is a lot of groups like one class alone can have six or eight groups.”
- c. Students at South Texas College rated the importance, satisfaction and frequency of use of computers on campus in the Community College Survey of Student engagement (CCSSE).

Community College Survey of Student Engagement (CCSSE)
Computer Labs

	2009	2011	2013
Frequency	63%	84%	82%
Satisfaction	73%	90%	92%
Importance	85%	95%	96%



- The Student Satisfaction Survey conducted in 2013 and 2014 at the Information Commons and Open Labs, indicated that there is approximately 35 percent of students who have to wait or leave without using the services because the computer lab or group stations are in use.

- The following graph shows the percentage of students who had to wait to use a computer.

	Fall 2013	Fall 2014
Never	59.2%	60.8%
1 or 2 Times	31.2%	29.0%
3 or 4 Times	7.2%	8.0%
5 or More Times	2.5%	2.3%

- The table below shows the percentage of students that had to leave without using a computer or group station:

	Fall 2013	Fall 2014
Never	63.1%	65.8%
1 or 2 Times	26.9%	24.2%
3 or 4 Times	6.2%	6.7%
5 or More Times	3.8%	3.4%

4. Library Visits & Lack of Space

Library visits at the Pecan Campus have averaged over 439,000 to 525,000 visits each year since 2009-2010, accounting for 53-55% of the visits at all STC libraries. Visits reached a high point in 2011-2012 but have remained constant at over 450,000 during most years. We believe these numbers have plateaued because of physical space and resources: there is little space left to accommodate additional students. Student reports and comments in the various surveys conducted over the past 4 years detailed above corroborate this belief.

Approximately a year and a half ago, the Pecan Campus library opened an after-hours, self-service area called the JagWired Café. This space stays open for several hours past the normal operating hours of the library each day, typically until midnight during the week. This space is consistently full until closing each day. However, this area only has 12 computer stations and the library is unable to expand further to meet students' needs. Designing a new library space would allow us to design spaces more adequately equipped to meet the need for extended hours services.

5. Lack of Specialized Spaces

a. Study Rooms

The Pecan Campus currently has 7 study rooms available for student use. When compared to the other campuses, this number is severely deficient. Considering that the Pecan Campus library serves over 50% of the student population districtwide shows just how far behind the other campus libraries it is in the number of study rooms. (A CIP

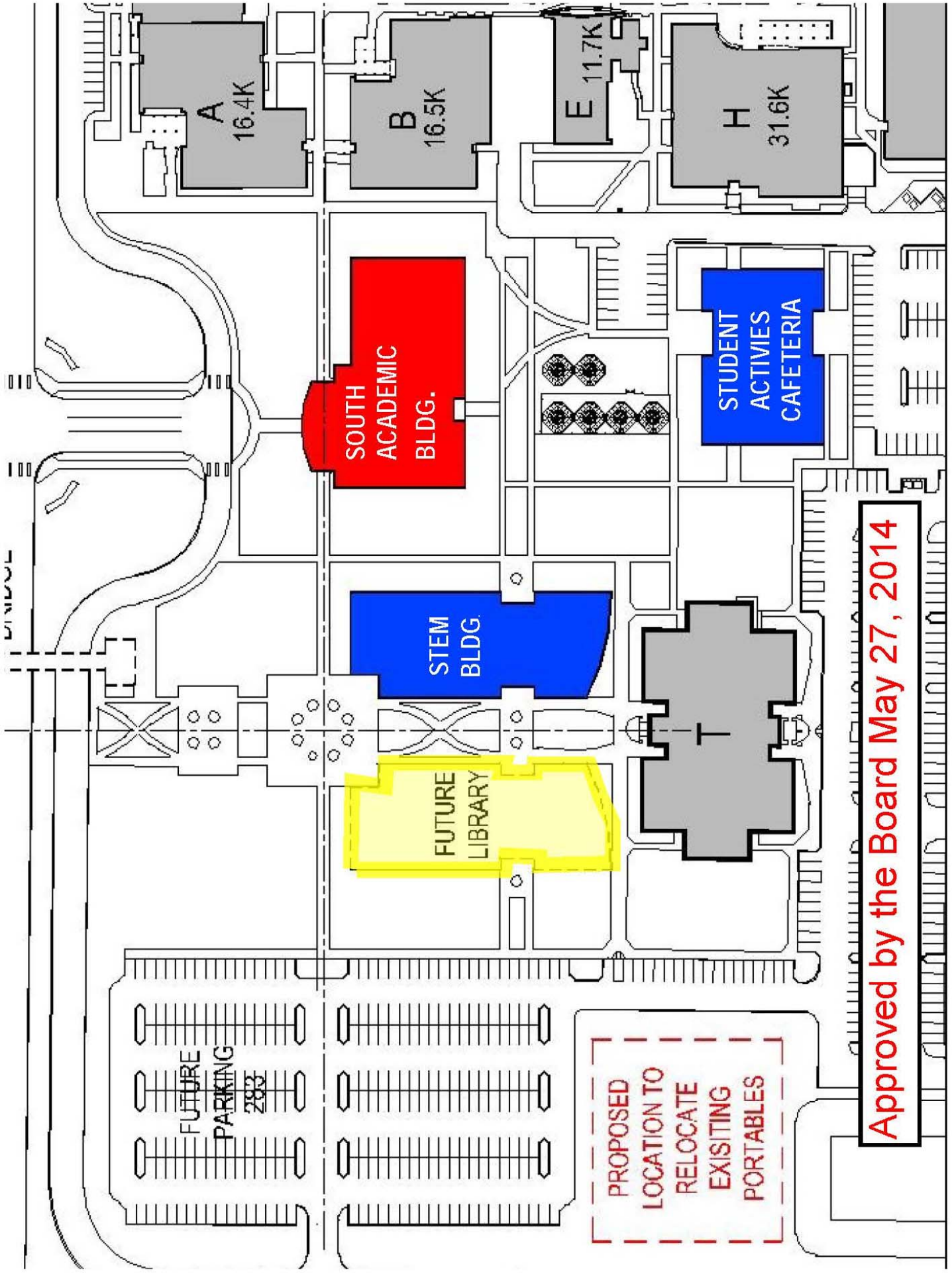
for additional study rooms is scheduled for this fiscal year, but these will be built at the expense of group and quiet study areas, reducing the availability of these spaces.)

The Pecan Campus library study rooms average between 600 and 900 uses per month. Average checkouts for study rooms are 2 hours. These numbers have remained relatively constant over the past several years, showing that there is little room for growth.

Library	Study Rooms
MV	7
NAH	4
Pecan	7
Starr	5
Tech	3

b. Lack of space for Library Instruction

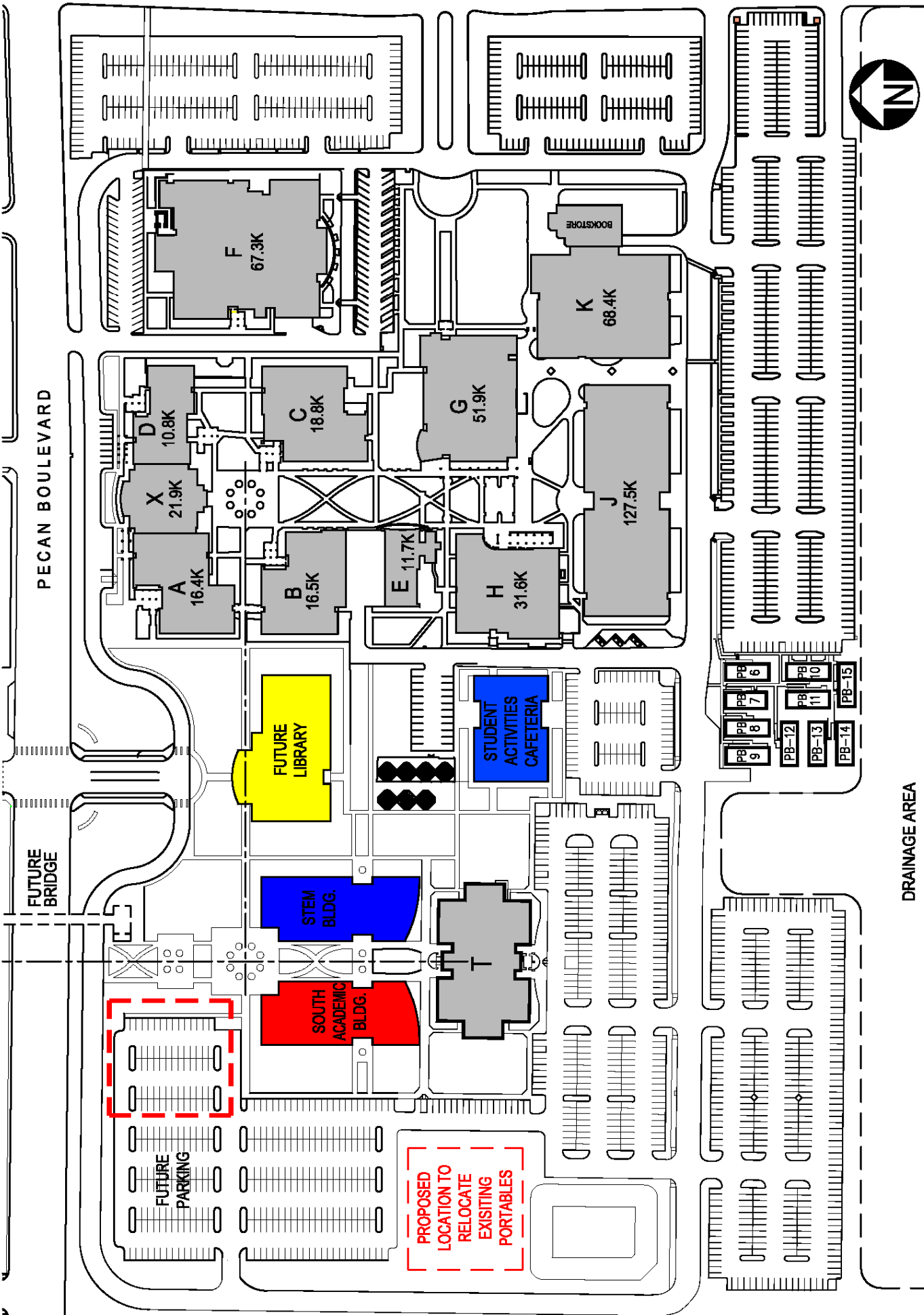
The Pecan Campus library has one teaching space dedicated to providing library instruction and orientation. The library often has to decline faculty requests for library instruction because this space is already in use. This space occupied consistently throughout the day, and in order to expand this service, additional teaching space is needed. To date in this academic year, the Pecan Campus library has served 2,478 students through library instruction.



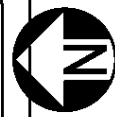
PECAN CAMPUS SOUTH SIDE - LOCATION OF BOND BUILDINGS

PECAN BOULEVARD

FUTURE BRIDGE



DRAINAGE AREA



PECAN CAMPUS SOUTH SIDE - LIBRARY/PARKING OPTION #1

PECAN BOULEVARD

FUTURE BRIDGE

OPTIONAL PARKING 21

OPTIONAL PARKING 23

FUTURE PARKING 333

FUTURE LIBRARY

STEM BLDG.

SOUTH ACADEMIC BLDG.

STUDENT ACTIVITIES CAFETERIA

PROPOSED LOCATION TO RELOCATE EXISTING PORTABLES

F 67.3K

X 21.9K

A 16.4K

B 16.5K

D 10.8K

C 18.8K

E 11.7K

H 31.6K

G 51.9K

J 127.5K

K 68.4K

BOOKSTORE

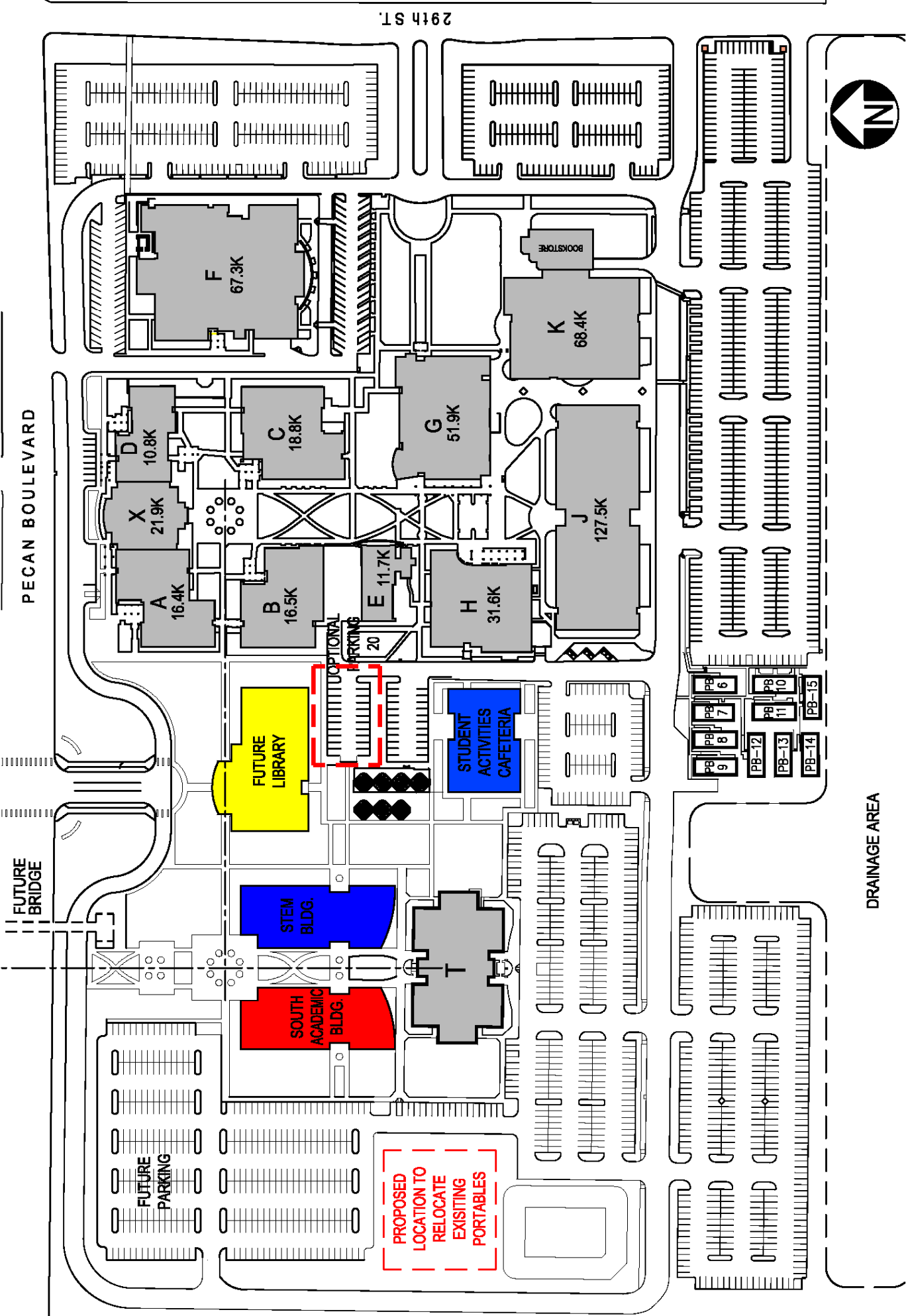
PB 9, PB 8, PB 7, PB 6, PB 11, PB 10, PB 12, PB 13, PB 14, PB 15



DRAINAGE AREA



PECAN CAMPUS SOUTH SIDE - LIBRARY/PARKING OPTION #2



PECAN CAMPUS SOUTH SIDE - LIBRARY/PARKING OPTION #3

Review and Recommend Action on Proposed Facility Lease Agreement with McAllen Chamber of Commerce Creative Incubator

Approval of proposed facility lease agreement with McAllen Chamber of Commerce Creative Incubator will be requested at the March 31, 2015 Board meeting.

STC's Continuing Education Department has continued offering art classes in the McAllen Chamber of Commerce Creative Incubator (former McAllen Library). The current lease agreement has expired and therefore staff is recommending that the agreement be approved for an additional year in order to continue using this facility.

Below is the proposed lease and a description for the proposed use:

Site	Spaces	Proposed Use	Estimated Cost	Term
McAllen Creative Incubator	Two classrooms	Art classes for Continuing Education	\$3,000.00 (\$10/student)	9/1/2014 to 8/31/2015

Staff recommends approval of this facility lease agreement for use during the period beginning September 1, 2014 through August 31, 2015. Funds for this lease will be generated by students' fees. It is estimated about 300 students will enroll in these art classes during the fiscal year.

It is requested that the Facilities Committee recommend for Board approval at the March 31, 2015 Board meeting, the proposed facility lease agreement with McAllen Chamber of Commerce for use of Creative Incubator facility as presented.

Review and Recommend Action on Contracting Architectural Design Services for the Technology Campus Building B Main Door and Frame Replacement and Building C Conference Room

Approval to contract architectural design services for the design of the Technology Campus Building B Main Door and Frame Replacement and Building C Conference Room project will be requested at the March 31, 2015 Board meeting.

Included in the FY 2014-2015 construction budget are funds for this project. The attached floor plan depicts the locations of the proposed improvements. The improvements to the main door will replace the existing door and frame to prevent water leaks. An exterior cover will be added to the main entrance to provide shade and to prevent blowing rain from entering. The conference room will serve the NAAMREI Department and will be built in a space that is currently underutilized.

Five architectural firms listed below were previously approved by the Board for one year to provide professional services as needed for projects under \$500,000.

1. Boultinghouse Simpson Gates Architects
2. EGV Architects, Inc.
3. ERO Architects, Inc.
4. PBK Architects
5. Rike Ogden Figueroa Alex Architects

Based on the following criteria, Rike Ogden Figueroa Alex Architects (ROFA) has been identified as the most qualified firm from the current list of approved architects and therefore recommended to provide architectural design services for this project.

Criteria:

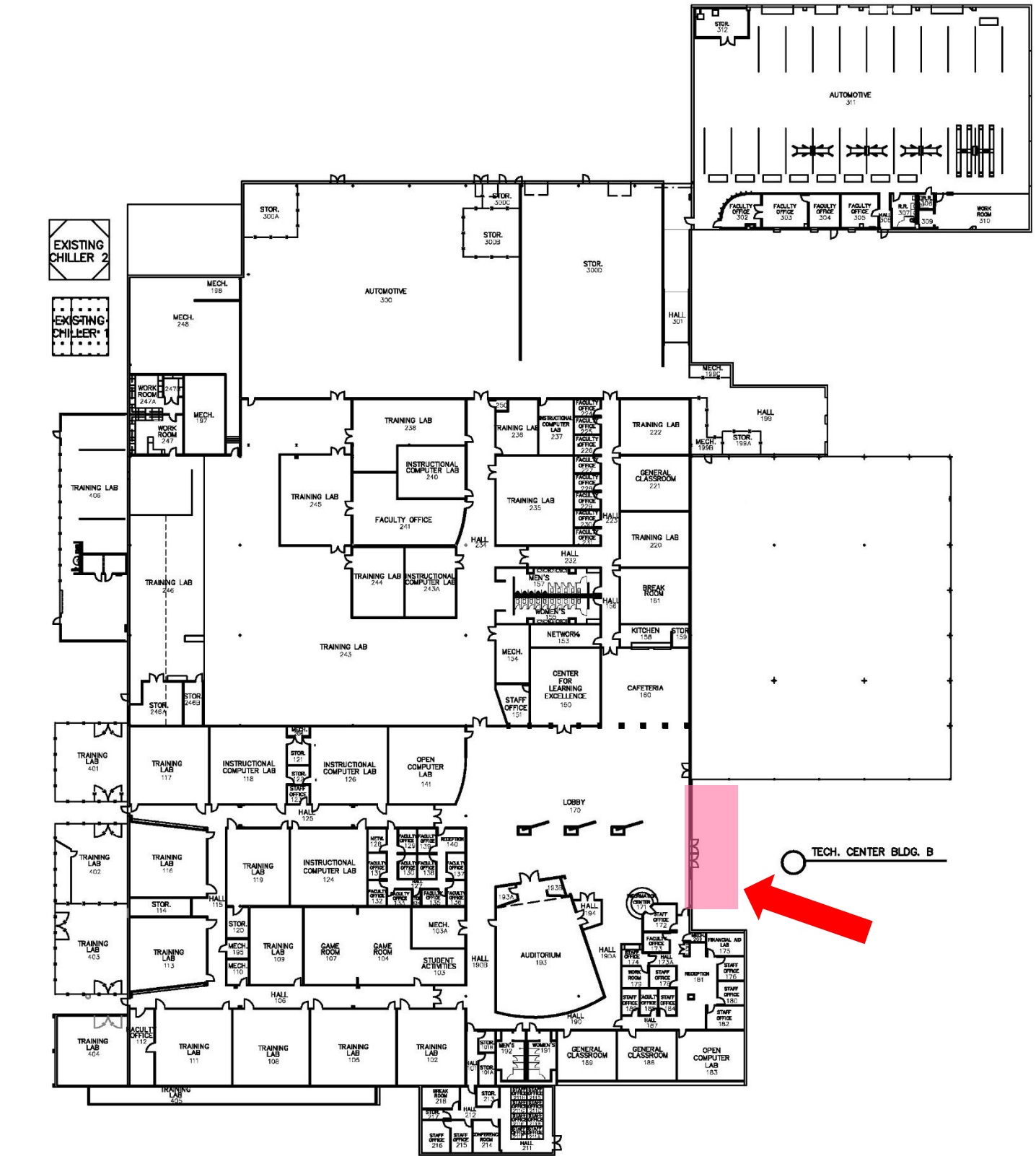
- Previous experience with facilities on the Technology Campus
- Project architect when this building was previously readapted for its current use
- Experience with other STC campus projects

Funds in the amount of \$110,000 are budgeted in the FY 2014-2015 construction budget for these improvements and \$16,500 are budgeted for design services with final amount to be negotiated.

Project Budget		
Budget Components	Amount Budgeted	Actual Cost
Design	\$16,500	Actual design fees are estimated at \$10,450 and will be finalized during contract negotiations.
Construction	\$110,000	Actual cost will be determined after the solicitation of construction proposals.

Staff will negotiate design fees with architect to determine an acceptable amount.

It is requested that the Facilities Committee recommend for Board approval at the March 31, 2015 Board meeting, the contracting of architectural design services with Rike Ogden Figueroa Alex Architects (ROFA) for the design of the Technology Campus Building B Main Door and Frame Replacement and Building C Conference Room project as presented.



Technology Campus Building B
Main Door and Frame Replacement

Review and Recommend Action on Contracting MEP Design Services for the Starr County Campus Building E Data Center Generator

Approval to contract mechanical, electrical, and plumbing (MEP) engineering design services for the Starr County Campus Building E Data Center Generator project will be requested at the March 31, 2015 Board meeting.

As a result of the recent college-wide Business Impact Analysis (BIA), it was recommended that a backup Data Center be prepared at the Starr County Campus. This Data Center will serve as a backup for the main Data Center currently located on the Pecan Campus. The existing Data Center houses the necessary computer servers which support the college's business operations and telecommunications. Preparing the backup Data Center at the Starr County Campus to include an electrical generator, will allow the College to continue operating in the event of a disaster, fire, or extended power outage affecting the Pecan Campus Data Center.

The three MEP engineering firms listed below were previously approved by the Board for one year to provide professional services as needed for projects under \$300,000.00.

1. DBR Engineering Consultants, Inc.
2. Halff Associates, Inc.
3. Sigma HN Engineers, PLLC

Based on the following criteria, Halff Associates has been identified as the most qualified firm from the current list of approved engineers and therefore recommended to provide architectural design services for this project.

Criteria:

- Previous experience with facilities on the Starr County Campus
- Project engineer for the building where the generator will be installed
- Experience with other STC generators

Funds are available in the FY 2014-2015 construction budget for design and construction of these improvements, with final engineering fees to be negotiated.

Project Budget		
Budget Components	Available Funds	Estimated Cost
Design	\$25,000	Actual design fees are estimated between \$22,000 and \$24,000 and will be finalized during contract negotiations.
Construction	\$22,500	Actual cost will be determined after the solicitation of construction proposals.

It is requested that the Facilities Committee recommend for Board approval at the March 31, 2015 Board meeting, the contracting of Mechanical, Electrical, and Plumbing (MEP) engineering design services with Halff Associates for the Starr County Campus Building E Data Center Generator project as presented.

Review and Recommend Action on Pool of Firms for Civil Engineering Services

Approval of a pool of firms to provide civil engineering design services as needed for non-bond projects with construction costs of less than \$500,000 will be requested at the March 31, 2015 Board meeting.

The previous approved pool to provide civil engineering design services expired on November 28, 2014. It is recommended that a minimum of four (4) firms be approved for a period beginning March 31, 2015 through March 30, 2016 with the option to renew for two one-year periods.

On January 2, 2015, a Request for Qualifications (RFQ) for solicitation of these services was made available and responses were received on January 27, 2015. A total of fifteen (15) firms submitted responses to the RFQ. The evaluation team prepared the attached summary of scoring and ranking for review by the Facilities Committee.

Once a pool of firms has been selected and approved by the Board of Trustees, the firms will be available to provide the College with civil engineering design services as needed for non-bond projects. Staff will recommend use of firms from the proposed pool, for non-bond projects as needed. Some of the anticipated engineering services which may be provided are as follows:

- Preparation of subdivision plats
- Preparation of property surveys
- Preparation of topographic surveys
- Preparation of meets and bounds surveys
- Design of parking lots
- Design of sidewalks and ADA accessible routes
- Design of site drainage systems
- Design of underground infrastructure
- Design of landscape improvements
- Design of irrigation systems
- Design of roadways and drives
- Resurfacing of existing parking lots and drives

Fees for these services could range from \$1,000 to \$48,000 depending on the scope and complexity of each construction project. As part of the fee negotiations process, each firm will be asked to submit a proposal after they have been assigned to a project. Each fee proposal will be reviewed by staff and negotiated to reach a fair and reasonable amount.

It is requested that the Facilities Committee recommend for Board approval at the March 31, 2015 Board meeting, a pool consisting of the top four (4) ranked firms to provide civil engineering design services as needed for district-wide non-bond projects for the period beginning March 31, 2015 through March 30, 2016 with the option to renew for two one-year periods.

**SOUTH TEXAS COLLEGE
CIVIL ENGINEERING SERVICES
PROJECT NO. 14-15-1048**

VENDOR	Dannenbaum Engineering Company-McAllen, LLC.	Halff Associates, Inc.	Hinojosa Engineering, Inc.	Javier Hinojosa Engineering	LNV, Inc.
ADDRESS	1109 W Nolana Loop Ste 208	5000 W Military Hwy Ste 100	108 W 18th St	416 E Dove Ave	801 W Nolana Ave Ste 202
CITY	McAllen, TX 78504	McAllen, TX 78503	Mission, TX 78572	McAllen, TX 78504	McAllen, TX 78504
PHONE	956-682-3677	956-664-0286	956-581-0143	956-668-1588	956-627-3979
FAX	956-686-1822	956-664-0282	956-581-2074	956-994-8102	361-883-1986
CONTACT	Louis H. Jones, Jr.	Robert L. Saenz	Ricardo Hinojosa	Javier Hinojosa	Robert M. Viera
2.1 Statement of Interest					
2.1.1 Statement of Interest for Project	Stated the firm's established relationships with local, State and Federal agencies and their understanding of local site conditions.	Pointed to the previous successful projects the firm has completed for STC and other educational institutions and their experience working with boards and staff of educational entities.	Indicated that they are the only local engineering firm that specialized in educational facilities.	Indicated that firm has assembled a project the will bring proper focus to the services. Stated that the principal will serve as the project engineer.	Firm emphasized the combined experience of the two staff members who would lead the project.
2.1.2 History and Statistics of Firm	- Originally established in 1945. - 11 locations in Texas, including McAllen office	- Founded in 1950 - Staff of over 504 - 33 staff at McAllen office, including 11 PE's	- Established in 1993 - 17 Employees - 2 professional engineers	- Established in 1996 - Located in McAllen, TX	- Established in 1962 as architectural/engineering firm - More than 126 employee throughout Texas - Offices in McAllen, Corpus Christi, Austin, Dallas/Ft Worth, Laredo and San Antonio
2.1.3 Statement of Availability and Commitment	Stated their commitment to provide personnel to meet or exceed the project schedule. Indicated a similar commitment from the subconsultant firms.	Indicated that they will commit the necessary resources to meet STC's needs and expedite all phases of the project.	Indicated that availability to STC will be their top priority. Included the responsibilities for the project of the principal and project manager, both professional engineers.	Indicated that they can begin work immediately on projects and will provide the necessary manpower to meet college timelines.	Indicated that firm is operating at 75-80 percent of capacity and can complete work in a timely manner.
2.2 Prime Firm					
2.2.1 Resumes of Principals and Key Members	Included Resumes for the following staff: - Louis H. Jones, PE, Principal-in-Charge - John A. Carter, PE, QA Officer - Richard D. Seitz, PE, Project Manager - Nathaniel Olivarez, PE, Site Civil - Manny Carrizales, RPLS, EIT, Project Surveyor - Daryl W. Duren, Scheduler - James M. Kisiel, PE, MEP/HVAC - Leonardo Munoz, PE, RME, MEP/Fire Protection - Andrew T. Heffner, RLA, Landscape Architect - Steven L. McGarraugh, AIA, Architect/URE	Included resumes for the following staff: - Robert L. Saenz, PE, CFM, PMP, Principal-in-Charge - Benjamin E. Macias, PE, Project Manager - Raul Garcia JR., PE, CFM, Drainage Design - Marcos Diaz, PE, Civil Site Design - Thomas E. Dearmin, PE, LEED AP, Electrical Design - Jose Delgado, PE, LEED AP, Electrical Design - Wayne Cooper, RLA, AICP, Landscape Architecture - Tobin L. Fox, RLA, LI, Landscape Architecture - Paul Rielly, PE, Structural Design - Jason Jernigan, RPLS, Surveying	Included resumes for the following staff: - Ricardo Hinojosa, PE, Principal in Charge - Reynaldo Robles, PE, Project Engineer - Jorge Rodriguez, RPLS, Surveyor	Included resumes for the following staff: - Javier Hinojosa, PE, Principal	Included resumes for the following staff: - Robert M. Viera, PE, RPLS, Principal-in-Charge - Eugene Palacios, PE, CFM, Project Manager - Juan Pimentel, PE, Civil Support - Richard Correa, PE, CFM, Civil Support - Ernesto Flores, CFM, Civil Support - Eric A. Trejo, PE, SECB, Structural Design - Amy R. Hesselstine, PE, Environmental/Permitting
2.2.2 Project Assignments and Lines of Authority	Listed the staff, whose resumes were provided, their roles and time commitment from each.	Project assignments were provided for all the staff for whom resumes were submitted. The time commitment for each was also indicated.	Reiterated the roles of the two top staff of the firm, who will serve as principal and project manager.	Listed Principal's and three other staff member's duties on projects. Specific time assignments were not indicated.	The time assignments were provided for the seven staff whose resumes were included.
2.3 Project Team					
2.3.1 Organization chart with Role of Prime Firm and basic Services consultants	Included organization chart with staff who will be involved in project. Included the following sub-consultants: - Trinity MEP Engineering - Heffner Design Team (Landscape Architect) - RGV Architecture	Provided organization chart that showed the roles of the staff who would be involved in the project. No sub-consultants are shown. Firm indicated that it has all resources needed to provide all services.	Included organization chart that showed all firm staff and their roles. No sub-consultants were included.	Included organization chart with staff who will be involved in project and included the following sub-consultants: - CVQ Land Surveyors - Trinity MEP Engineering	Included organization chart that showed the staff who would be involved in the project. They included one consultant, Sigma HN Engineers, for MEP engineering. Stated that additional sub-consultants could be added at STC's request.
2.4 Representative Projects					
2.4.1 Minimum of 5 projects firm has worked on	- STC - Pecan Campus Parking Lot Expansion and Parking and Street Improvements - South Texas Educational Technologies Horizon Montessori McAllen Middle School - McAllen ISD - Parking Lots and Drives Resurfacing Projects - McAllen ISD - Track and Field Resurfacing Projects - Hidalgo County WIC Program-Women, Infant and Children's (WIC) Clinic	- McAllen ISD- McAllen Veterans Memorial Stadium Improvements (\$4 million) - UT-Pan American - 500-Space Parking Lot (\$973,000) - Texas A&M Kingsville - Turner-Bishop-Martin Parking Lot Repair (\$18.5 million) - Texas State Technical College - Oak Tree Apartments (\$130,000) - STC - Mid Valley Campus Southwest Parking Expansion (\$392,014)	- Donna ISD - Donna ISD North High School #2 (\$3.5 million) - McAllen Public Utility - City of McAllen New Convention Center (\$1,426,000) - La Joya ISD - La Joya Juarez Lincoln High School No. 3 (\$57,413,000) - PSJA ISD - Football Stadium Renovations (\$1,310,066) - City of Port Isabel - Events Center (\$3,930,000)	- Mission CISD - Tom Landry Stadium Parking Lot Improvements (\$762,776) - Mission CISD - Storm Drainage Improvements at Bryan, Hurla Midkiff, and Salinas Elementary School (\$589,603.28) - Mission CISD - Mission High School Girls Softball Field Parking Lot Improvements (\$210,000) - PSJA ISD - Aida C. Escobar (Whitney) Elementary School (\$700,000) - La Joya ISD - Nellie Schunior Central Administration Building Parking Lot Improvements (\$690,000)	- City of Pearsall - Law Enforcement Center (\$1 million) - Kenedy County - New Law Enforcement Center (\$2.9 million) - Port of Corpus Christi Authority - Parking Lots at Whataburger Field (\$2.5 million) - L& F Distributors - New Building Site Improvements (\$9 million) - City of Corpus Christi - Americans With Disabilities Act Master Plan (cost not indicated)
2.5 References					
2.5.1 References for five projects	- South Texas College - South Texas Educational Technologies - McAllen ISD (listed twice) - Hidalgo County WIC Program	- McAllen ISD - Texas A&M University- Kingsville - University of Texas-Pan American - Texas State Technical College - South Texas College	- Donna ISD - City of McAllen - La Joya ISD - PSJA ISD - City of Port Isabel	- Mission CISD (listed 3 times) - PSJA ISD - La Joya ISD	- Kenedy County - City of Pearsall - City of Corpus Christi - Brooks County - Port of Corpus Christi
2.6 Project Execution					
2.6.1 Willingness and ability to expedite services. Ability to supplement production.	Indicated that firm has more than adequate personnel from which to supplement or replace a member of the team if necessary.	Indicated that project schedules are updated regularly and if it falls behind, a contingency plan is produced for schedule recovery.	Indicated their ability and willingness to expedite design services, but did not address how they would supplement production capability.	Did not directly address the section, but indicated that firm has the experience, resource, personnel, knowledge and commitment to perform services.	Firm provided a description of its process to maintain work on schedule on a project.
2.6.2 Firm's quality assurance program	Submitted a quality control plan. Indicated that they developed an integrated quality control program founded upon STC and industry best practices.	Provided a summary quality assurance program that largely entails document review both internally and by client.	Indicated that firm identifies quality requirements for a project, but did not elaborate on the program.	Firm did not address this section.	Described their internal reviews for maintaining quality control through peer review of designs. They also submit documents to an internal 3rd party review.
TOTAL EVALUATION POINTS	543	570	541.25	548.5	543.5
RANKING	8	1	10	6	7

**SOUTH TEXAS COLLEGE
CIVIL ENGINEERING SERVICES
PROJECT NO. 14-15-1048**

VENDOR	Melden & Hunt, Inc.	M Garcia Engineering, LLC.	Naismith Engineering, Inc.	Perez Consulting Engineers, LLC.	PlaGar Engineering, LLC.
ADDRESS	115 W McIntyre St	400 Nolana Ste N2	789 E Washington St	808 Dallas Ave	1155 Military Hwy
CITY	Edinburg, TX 78541	McAllen, TX 78504	Brownsville, TX 78520	McAllen, TX 78501	Brownsville, TX 78520
PHONE	956-381-0981	956-687-9421	956-541-1155	956-631-4482	956-550-9995
FAX	956-381-1839	956-687-3211	775-305-2554	956-682-1545	956-550-9939
CONTACT	Fred L. Kurth	Mariano Garcia	Anna A. Smith	J. David Perez	Placido J. Garcia
2.1 Statement of Interest					
2.1.1 Statement of Interest for Project	Pointed out the firm's 67 years of experience in the Rio Grande Valley and the professional expertise they present.	Pointed out the firm's McAllen location and the experience of their principal in both public and private projects.	Pointed out the firm's experience in infrastructure projects for governmental entities in the Rio Grande Valley.	Stated their interest in work for STC and cited previous work at four of its campuses.	Stated the firm's experience in various types of infrastructure projects with governmental entities.
2.1.2 History and Statistics of Firm	- Founded in 1947 - Offices in Edinburg and Rio Grande City - 50 staff	- Established in 2007 - 4 staff, including one professional engineer - Located in McAllen, TX	- Established in 1949 - Office in Corpus Christi, Austin, and Brownsville - 19 civil engineers companywide	- Established in 1991 - Located in McAllen, TX	- Established in 2004 - Located in Brownsville, TX - 4 employees
2.1.3 Statement of Availability and Commitment	Pointed to the firm's depth and flexibility. Indicated that with current workload, they have enough capacity to complete projects on time.	Affirmed availability and commitment to projects. Indicated they will provide a "streamlined" approach.	Indicated that the "best employees" will be immediately available to work on the projects and would commit from beginning to completion.	Indicated that STC projects would be completed within schedule. Added that current projects are 85% complete.	Did not directly address availability and commitment, but was implied in their submittal for the projects.
2.2 Prime Firm					
2.2.1 Resumes of Principals and Key Members	Included resumes for the following staff: - Fred L. Kurth, PE, RPLS, Project Manager/Engineer - Kelley Heller-Vela, PE, Asst. Project Manager/Engineer - Robert Tamez, RPLS, Land Surveyor - Mario Reyna, PE, Project Administrator	Included resumes for the following staff: - Mariano Garcia, PE, President	Included resumes for the following staff: - Anna A. Smith, PE, Principal - Paolina Vega, PE, Sitework - Lewis B. Shrier, PE, Structural Engineer - Craig B. Thompson, PE, Construction Services - Allen Beyer, PLA, Landscape Architect - Wilfredo Rivera Jr., PE, Project Engineer - Jim Boggs, AIA, Project Architect	Included resumes for the following staff: - J. David Perez, PE, President - Jorge D. Perez, PE, Vice President - Rene Gonzalez, PE, Project Engineer	Included resumes for the following staff: - Placido J. Garcia, PE, Principal - Emperatriz Garza, Civil Engineering Technician - Aracely Aguilar, Administrative Assistant
2.2.2 Project Assignments and Lines of Authority	Enumerated the duties each of the staff members will have on the project and the time each will devote to it.	Indicated that principal will develop project assignments after review of project scope. Time assignments were provided for all 4 staff members.	Showed list of staff to be assigned to projects. Did not include time assignments.	Indicated time assignments on STC projects for the top three staff.	Listed the firm staff named above and a drafting technician and the assignments for each. Time assignments for each were also included.
2.3 Project Team					
2.3.1 Organization chart with Role of Prime Firm and basic Services consultants	Included an organization chart that included the staff who would be involved in projects. They included the following subconsultants: Sigma HN Engineers (MEP) and SSP Design (Landscape Architect).	Included an organization chart showing staff duties. Included the following sub-consultants: - ROW Surveying Services - MEP Solutions - SSP Design - Chanin Engineering	Included organization chart that showed lines of authority. Did not include any sub-consultants.	Included organization chart that showed the main firm staff. It included the following sub-consultants: - CVQ Land Surveyors - SSP Design - MEP Solutions Engineering - Raba Kistner, Inc. - GAMA Building Access & Facility Support	Included organization chart that showed the staff and their assignments. It included the following sub-consultants: - Amaya Surveying - Felix Zapata
2.4 Representative Projects					
2.4.1 Minimum of 5 projects firm has worked on	- South Texas College - Pecan Campus Portable Relocation - (\$450,000) - IDEA Public Schools - Campus Parking Renovation (\$193,000) - Edinburg CISD - L.B. Johnson Elementary (\$115,000) - McAllen ISD - McAllen ISD Pavilion Additions (\$1,125,000) - US Army Corps of Engineers - Army Reserves Center (\$4.5 million)	- Sharyland ISD - Pioneer High School Subdivision (\$40,500,000) - Sharyland ISD - Support Services Bus and Staff Parking Lot Improvements (\$460,000) - Idea Public Schools - McAllen Subdivision (\$4,788,000) - Idea Public Schools - Weslaco Subdivision (\$8,371,000) - PSJA ISD - Palmer Elementary Subdivision (\$12,940,000)	- UT-Brownsville - Street, Parking, and Sidewalk Improvements (\$2.15 million) - City of Los Fresnos - City Engineer (\$471,000) - City of Alice - Multi-use Complex (\$25 million) - City of Brownsville - Metro Bus Stop Improvements (\$550,000) - Nueces County - Richard M. Borchard Regional Fairgrounds (\$31.5 million)	- STC - Nursing & Allied Health Center (cost not indicated) - UTPA - Lamar Parking Lot (cost not indicated) - STC - Pecan Campus Infrastructure Improvements Project (\$3 million) - PSJA ISD - T-STEM Early College & Football Stadium Parking Lot (\$1,800/parking space)	- Brownsville ISD - Sams Memorial Stadium Parking Lot Improvements and Expansion (cost not indicated) - Brownsville ISD - Central Administration Building Parking Improvements (cost not indicated) - Texas Southmost College - UTB/TSC E. 19th St./E. Jackson St. Parking Improvements (cost not indicated) - Texas Southmost College- Brownsville Compress Area Parking Lot Improvements (cost not indicated)
2.5 References					
2.5.1 References for five projects	- South Texas College - IDEA Academy - Edinburg CISD - McAllen ISD - US Army Corps of Engineers	Sharyland ISD (listed twice) - Idea Academy (listed twice) - PSJA ISD	- City of Los Fresnos - UT Brownsville - City of Alice - City of Brownsville	- Boultinghouse Simpson Gates Architects - UT-Pan American - PSJA ISD - ERO Architects	- City of Brownsville - Brownsville ISD - Harlingen CISD - Knowles Architectural & Planner, Inc. - Walker Perez Associates
2.6 Project Execution					
2.6.1 Willingness and ability to expedite services. Ability to supplement production.	Reiterated the availability of their extensive staff resources to meet project needs and add any additional resources that may be required.	Indicated that firm recognizes project timelines and will allocate the necessary resources to achieve project milestones.	Indicated that firm has sufficient staff to meet any timeline established by client.	Stated their understanding that projects need to be on fast-track. Indicated that additional personnel would be added as workload increases.	Indicated experience in providing services on "as-needed" basis. Stated that they will assign additional work hours necessary for work to be done.
2.6.2 Firm's quality assurance program	Outlined the firm's methodology for maintaining quality on projects.	Firm did not address this section.	Mentioned need of quality control but did not provide details on how it is accomplished. Did indicate need for on-site presence of firm during entire construction period.	Listed a set of procedures that are implemented to maintain quality on projects.	Did not directly address this section, but made mention of need to maintain clear plans and specifications and communication between owner and engineer.
TOTAL EVALUATION POINTS	554.75	540.75	536	568	515
RANKING	3	11	13	2	14

**SOUTH TEXAS COLLEGE
CIVIL ENGINEERING SERVICES
PROJECT NO. 14-15-1048**

VENDOR	R. Gutierrez Engineering Corporation	S&GE, LLC.	SWG Engineering, LLC.	South Texas Infrastructure Group, LLC.	TEDSI Infrastructure Group, Inc.
ADDRESS	130 E Park Ave	1803 Mozelle St	611 International Blvd	900 S Stewart Rd Ste 13	1201 E Expway 83
CITY	Pharr, TX 78577	Pharr, TX 78577	Weslaco, TX 78596	Mission, TX 78572	Mission, TX 78572
PHONE	956-782-2557	956-475-3118	956-968-2194	956-424-3335	956-424-7898
FAX	956-782-2558	210-493-9205	956-968-8300	956-583-7116	956-424-7022
CONTACT	Ramiro Gutierrez	Javier Garcia	Randy Winston	Julio Cerda	Jesse Salinas
2.1 Statement of Interest					
2.1.1 Statement of Interest for Project	Stated the firm's interest in continuing a partnership to be one of the college's providers of engineering services.	Indicated that firm is suited for the services required. Pointed to firm's expertise in providing services to educational institutions, including higher education.	Indicated their intent to serve STC. Pointed to the firm's long experience in the Rio Grande Valley. Pointed to work on STC Mid Valley Campus.	Firm presented a summary of their qualifications and expressed their interest in providing services to STC.	Firm cited their participation in Hidalgo County civic organizations that work to improve quality of life and their infrastructure work for school, local governments and other governmental organizations.
2.1.2 History and Statistics of Firm	- Established in 1998 - Two professional engineers on staff - One Surveyor - 14 total staff members	- Established in 1994 - Offices in Pharr and San Antonio	- Established in 1945 - Over 25 employees - Has provided work for various area school districts.	- 2 years in business - 5 employees	- Established in 1984 - 33 employees - 10 professional engineers - Offices located in Mission, and Houston
2.1.3 Statement of Availability and Commitment	Stated the firm's readiness to commence work on any STC project. Indicated that if needed, they have the resources to acquire additional personnel.	Indicated that firm leadership will be significantly involved in the project.	Indicated the firm's readiness and capability for serving STC on any size project.	Stated that their goal is to provide STC with projects that can be completed in a timely manner within the available funding.	Indicated their availability and commitment to completion of projects according to STC schedules. Pointed to track record for other clients.
2.2 Prime Firm					
2.2.1 Resumes of Principals and Key Members	Included resumes for the following staff: - Ramiro Gutierrez, PE, President and Principal-in-Charge - Hernan A. Lugo, PE, Senior Project Manager - Pablo Soto, Jr., RPLS	Included resumes for the following staff: - Javier Garcia, PE, Project Manager - JoEmma P. Sherfey, PE, Quality Assurance/Quality Control - Jim Boenig, PE, Regulatory Compliance - Robert Allen, PE, Civil Site Design-Grading/Paving & Drainage - Ricardo Salazar, Utility Coordinator - Hector H. Herrera, Survey, Drafting, Design Support, Utility Relocation - Denyce Alcorta, Staff Design Engineer - Frank Estrada, RPLS, Surveying	Included resumes for the following staff: - Joseph B. Winston Jr., PE, Vice President - Randall C. Winston, PE, President - Alfonso A. Gonzalez, PE, Project Engineer - Humberto Lopez, EIT - Cindy Meza, Project Manager	Included resumes for the following staff: - Julio C. Cerda, PE, Project Manager - Victor Treviño, EIT - David Perez, Graduate Engineer	Included resumes for the following staff: - Craig F. Strong, PE, QA/QC - Jose A. Sanchez, PE, Project Manager - Roberto Fina Carral, PE, Roadway Design, Civil Improvements and Task Leader - Mark D. Corbitt, PE, Drainage Design/Studies Task Leader - Eric R. Dietrich, PE, Traffic Engineering Design/Studies Task Leader
2.2.2 Project Assignments and Lines of Authority	Briefly described the duties of each of the named staff who would work on a project. Did not give specific time assignments, but indicated that each will be assigned "as much as may be needed."	Indicated the time commitment from each of the team members who would be assigned to project.	Described the roles and time assignments of each of the three professional engineers on staff who would be involved in projects.	Described the roles of each of the three staff members named above. Also provided the time assignments for each.	Reiterated list of staff whose resumes were included and their respective duties. Indicated time commitment for each staff member.
2.3 Project Team					
2.3.1 Organization chart with Role of Prime Firm and basic Services consultants	Included organization chart that showed team members and their roles. It included the following sub-consultants: - Sigma HN Engineers - CLH Engineering, Inc. - Stephen P. Walker Landscape Architect	Included organization chart that indicates roles of each staff member. No subconsultants are shown.	Included organization chart that showed the top three staff and their specialties. They did not show any sub-consultants.	Included organization chart. It included the following sub-consultants: - M. Garcia Engineering, LLC - Channin Engineering, LLC - R.O.W. Surveying Services, LLC - MEP Solutions Engineering	Included organizational chart that showed team members and their roles. It included the following sub-consultants: - Raba Kistner - Aranda & Associates, Inc.
2.4 Representative Projects					
2.4.1 Minimum of 5 projects firm has worked on	- STC - Pecan Plaza Parking Lot Improvements (cost not indicated) - PSJA ISD - LBJ Middle School Renovations and Additions (cost not indicated) - PSJA ISD - Carnahan Elementary Parking Lot Additions (cost not indicated) - PSJA ISD - Audie Murphy Middle School (cost not indicated) - PSJA ISD - Tennis Courts Resurfacing, Demolition and Construction	- UT Health Science-San Antonio - Dental School Parking Lot Expansion (\$300,000) - UT Health Science -San Antonio - Pavilion Building, Promenade and Parking Expansion (\$35 million) - UT Health Science - San Antonio - MARC Building and Parking Lot (\$8.5 million) - UT Health Science - San Antonio - UTPA Campus Demolition (\$500,000) - Texas A&M International - Student Service Center (\$2.3 million)	- Mercedes ISD - Early Childhood Development (cost not indicated) - Donna ISD - Donna Sanchez Elementary (cost not indicated) - Idea Academy - Idea Academy (cost not indicated) - Mercedes ISD - Mercedes Junior High (cost not indicated) - La Feria ISD - La Feria Solis Elementary (cost not indicated)	- Steve Lollis - Orchard States (no cost indicated) - Gabriel Kamel - Marvel Plaza- (no cost indicated) - Charles Carter - Rockingham Subdivision (no cost indicated) - City of Mission - Inspiration Road Overpass (no cost indicated) - City of Edinburg - Mile 2 Hike and Bike Trail (no cost indicated)	- City of Edinburg - Edinburg Safe Routes to School Phase I & II - City of McAllen - 23rd St. Water Main Improvements - Hidalgo County Regional Mobility Authority - SH 365/International Bridge Trade Corridor (IBTC Lighting Study - UTPA - UTPA Pedestrian Study - STC - Proposed Expansion of STC Weslaco Campus Traffic Study
2.5 References					
2.5.1 References for five projects	- South Texas College - PSJA ISD (listed 4 times)	- UT Health Science Center - San Antonio (listed twice) - City of Pharr - San Antonio Water System (listed twice) - SSC Service Solutions - Texas A&M International University	- Mercedes ISD - Donna ISD - Idea Academy - City of La Feria	- Joseph Palacios -Hidalgo County Commissioner Precinct #3 - Cameron County Commissioner Precinct #3 - City of Mission	- City of Edinburg - City of McAllen - Dannenbaum Engineering Corporation - Perez Consulting Engineers - South Texas College
2.6 Project Execution					
2.6.1 Willingness and ability to expedite services. Ability to supplement production.	Indicated that the firm's ability to commence work on any project immediately.	Stated that firm used to delivery projects on accelerated schedules. Also stated that they could pull resources from their other office.	Indicated willingness to expedite services and meet schedule demands.	Did not specifically address expediting of work, but detailed the phases of work that would be followed to maintain work schedule.	Stated their commitment to deadlines and the allocation of additional resources from Houston office if needed.
2.6.2 Firm's quality assurance program	Firm did not address this section.	Summarized their quality control process and gave three examples of projects where it has been applied.	Firm described the phases they follow for a project to maintain within budget and schedule, but did not detail how quality is maintained.	indicated their commitment to quality control. Described their review process for maintaining quality in the design process.	One of the PE's is assigned to quality control. Summarized their quality control process in the design work.
TOTAL EVALUATION POINTS	553.25	552	542.25	537	537
RANKING	4	5	9	12	12

**SOUTH TEXAS COLLEGE
CIVIL ENGINEERING SERVICES
PROJECT NO. 14-15-1048
EVALUATION SUMMARY**

NAME		Dannenbaum Engineering Company- McAllen, LLC.	Half Associates, Inc.	Hinojosa Engineering, Inc.	Javier Hinojosa Engineering	LNV, Inc.
ADDRESS		1109 Nolana Loop Ste 208	5000 W Military Hwy Ste 100	108 W 18th St	416 E Dove Ave	801 W Nolana Ave Ste 202
CITY/STATE/ZIP		McAllen, TX 78504	McAllen, TX 78503	Mission, TX 78572	McAllen, TX 78504	McAllen, TX 78504
PHONE		956-686-1822	956-664-0286	956-581-0143	956-668-1588	956-627-3979
FAX		956-686-1822	956-664-0282	956-581-2074	956-994-8102	361-883-1986
CONTACT		Louis H. Jones, Jr.	Robert L. Saenz	Ricardo Hinojosa	Javier Hinojosa	Robert M. Viera
1	2.1 Statement of Interest - up to 100 points	92	96	90	88	90
	2.1.1 Statement of interest on projects	90	95	92	92	90
	2.1.2 History and important statistics about the prime firm	91	97	92	90	88
	2.1.3 Availability and commitment of firm, consultants and key professionals	95	98	96	92	92
		92	96.5	92.5	90.5	90
2	2.2 Prime Firm - up to 100 points	92	97	89	88	90
	2.2.1 Experience and expertise of principles and key members, including resumes	90	95	92	90	91
	2.2.2 Proposed project assignments, lines of authority, estimated time assignment of personnel	91	97	92	88	90
		90	96	95	90	92
		90.75	96.25	92	89	90.75
3	2.3 Project Team - up to 100 points	92	94	88	90	90
	2.3.1 Organizational chart showing, the roles of the prime firm and basic services consultants	91	92	90	91	89
	--Name Consultant and provide brief history	89	96	82	90	90
	--Consultant's proposed role in project	90	98	80	92	90
		90.5	95	85	90.75	89.75
4	2.4 Representative Projects - up to 100 points	90	94	88	90	91
	2.4.1 Specific data on 5 representative projects showing similarities	90	93	86	92	91
	Project name and location, Project owner, project description, whether the project was new construction, an addition, or a renovation, date project was started and completed, professional services prime firm provided for the project, project engineer, project manager, and names of firms and their expertise.	90	92	92	90	88
		93	98	90	92	92
		90.75	94.25	89	91	90.5
5	2.5 Five References - up to 100 points	87	95	93	98	90
	2.5.1 Name Owner and Owner's Representative and phone numbers	87	95	93	98	90
		87	95	93	98	90
		87	95	93	98	90
		87	95	93	98	90
6	2.6 Project Execution - up to 100 points	94	94	89	86	94
	2.6.1 Expedite design and construction administration. Production capability to meet schedule demands.	90	91	91	92	93
	2.6.2 Firm's quality assurance program and how the firm maintains quality control.	89	92	87	86	90
		95	95	92	93	93
		92	93	89.75	89.25	92.5
TOTAL EVALUATION POINTS		543	570	541.25	548.5	543.5
RANKING		8	1	10	6	7

SOUTH TEXAS COLLEGE
CIVIL ENGINEERING SERVICES
PROJECT NO. 14-15-1048
EVALUATION SUMMARY

NAME		Melden & Hunt, Inc.	M Garcia Engineering, LLC.	Naismith Engineering, Inc.	Perez Consulting Engineers, LLC.	PlaGar Engineering, LLC.
ADDRESS		115 W McIntyre St	400 Nolana Ste N2	789 E Washington St	808 Dallas Ave	1155 Military Hwy
CITY/STATE/ZIP		Edinburg, TX 78541	McAllen, TX 78504	Brownsville, TX 78520	McAllen, TX 78501	Brownsville, TX 78520
PHONE		956-381-0981	956-687-9421	956-541-1155	956-631-4482	956-550-9995
FAX		956-381-1839	956-687-3211	775-305-2554	956-682-1545	956-550-9939
CONTACT		Fred L. Kurth	Mariano Garcia	Anna A. Smith	J. David Perez	Placido J. Garcia
1	2.1 Statement of Interest - up to 100 points	94	85	92	93	83
	2.1.1 Statement of interest on projects	91	90	90	92	86
	2.1.2 History and important statistics about the prime firm	93	85	82	96	84
	2.1.3 Availability and commitment of firm, consultants and key professionals	96	93	93	97	90
		93.5	88.25	89.25	94.5	85.75
2	2.2 Prime Firm - up to 100 points	92	84	88	93	88
	2.2.1 Experience and expertise of principles and key members, including resumes	91	91	90	95	82
	2.2.2 Proposed project assignments, lines of authority, estimated time assignment of personnel	93	84	88	93	84
		95	90	88	98	88
		92.75	87.25	88.5	94.75	85.5
3	2.3 Project Team - up to 100 points	92	90	90	94	85
	2.3.1 Organizational chart showing, the roles of the prime firm and basic services consultants	92	91	84	94	82
	--Name Consultant and provide brief history	94	88	85	95	85
	--Consultant's proposed role in project	90	88	90	95	88
		92	89.25	87.25	94.5	85
4	2.4 Representative Projects - up to 100 points	92	90	90	92	85
	2.4.1 Specific data on 5 representative projects showing similarities	90	88	89	95	84
	Project name and location, Project owner, project description, whether the project was new construction, an addition, or a renovation, date project was started and completed, professional services prime firm provided for the project, project engineer, project manager, and names of firms and their expertise.	90	90	88	92	84
		95	85	92	90	85
		91.75	88.25	89.75	92.25	84.5
5	2.5 Five References - up to 100 points	92	100	90	97	88
	2.5.1 Name Owner and Owner's Representative and phone numbers	92	100	90	97	88
		92	100	90	97	88
		92	100	90	97	88
		92	100	90	97	88
6	2.6 Project Execution - up to 100 points	93	90	88	94	88
	2.6.1 Expedite design and construction administration. Production capability to meet schedule demands.	92	86	92	93	84
	2.6.2 Firm's quality assurance program and how the firm maintains quality control.	91	85	90	95	84
		95	90	95	98	89
		92.75	87.75	91.25	95	86.25
TOTAL EVALUATION POINTS		554.75	540.75	536	568	515
RANKING		3	11	13	2	14

SOUTH TEXAS COLLEGE
CIVIL ENGINEERING SERVICES
PROJECT NO. 14-15-1048
EVALUATION SUMMARY

NAME		R. Gutierrez Engineering Corporation	S&GE, LLC.	SWG Engineering, LLC.	South Texas Infrastructure Group, LLC.	TEDSI Infrastructure Group, Inc.					
ADDRESS		130 E Newcombe Park Ave	1803 Mozelle St	611 International Blvd	900 S Stewart Rd Ste 13	1201 E Expway 83					
CITY/STATE/ZIP		Pharr, TX 78577	Pharr, TX 78577	Weslaco, TX 78596	Mission, TX 78572	Mission, TX 78572					
PHONE		956-782-2557	956-475-3118	956-968-2194	956-424-3335	956-424-7898					
FAX		956-782-2558	956-475-3118	956-968-8300	956-583-7116	956-424-7022					
CONTACT		Ramiro Gutierrez	Javier Garcia	Randy Winston	Julio Cerda	Jesse Salinas					
1	2.1 Statement of Interest - up to 100 points	92	91	91	88	88					
	2.1.1 Statement of interest on projects	92.25	91.25	90.25	89.5	88.25					
	2.1.2 History and important statistics about the prime firm						91	89	88	89	
	2.1.3 Availability and commitment of firm, consultants and key professionals						91	88	90	86	
	95						93	92	90		
2	2.2 Prime Firm - up to 100 points	92	92	91	85	90					
	2.2.1 Experience and expertise of principles and key members, including resumes	92.75	90.25	90.25	85.75	89.75					
	2.2.2 Proposed project assignments, lines of authority, estimated time assignment of personnel						91	88	88	90	
							92	90	85	89	
	96						93	85	90		
3	2.3 Project Team - up to 100 points	92	92	90	90	90					
	2.3.1 Organizational chart showing, the roles of the prime firm and basic services consultants	92	90	87.5	89.5	89.5					
	--Name Consultant and provide brief history						90	86	90	90	
	--Consultant's proposed role in project						91	89	88	88	
--Projects Consultant and prime have worked together on in last 5 years	95						93	90	90		
	--Resumes showing experience and expertise of key individuals										
4	2.4 Representative Projects - up to 100 points	90	92	90	82	82					
	2.4.1 Specific data on 5 representative projects showing similarities	91.25	90.75	89.5	83.75	85.25					
	Project name and location, Project owner, project description, whether the project was new construction, an addition, or a renovation, date project was started and completed, professional services prime firm provided for the project, project engineer, project manager, and names of firms and their expertise.						90	91	87	84	85
							90	90	88	84	86
	95						90	93	85	88	
5	2.5 Five References - up to 100 points	97	98	95	98	94					
	2.5.1 Name Owner and Owner's Representative and phone numbers	97	98	95	98	94					
							97	98	95	98	94
							97	98	95	98	94
	97						98	95	98	94	
6	2.6 Project Execution - up to 100 points	87	91	90	88	88					
	2.6.1 Expedite design and construction administration. Production capability to meet schedule demands.	88	91.75	89.75	90.5	90.25					
	2.6.2 Firm's quality assurance program and how the firm maintains quality control.						87	90	88	89	
							88	87	91	89	
	90						92	95	95		
TOTAL EVALUATION POINTS		553.25	552	542.25	537	537					
RANKING		4	5	9	12	12					

Review and Recommend Action on Contracting Construction Services for the Pecan Campus Student Support Services Building Second Floor Re-Carpeting

Approval to select a contractor for the Pecan Campus Student Support Services Building Second Floor Re-Carpeting project will be requested at the March 31, 2015 Board meeting.

Carpeting in some areas of these buildings is over ten years old and is in need of replacement. Staff proposes to replace the carpet with carpet tile which is the current STC standard due to its higher quality and reduced maintenance.

STC staff issued the necessary plans and specifications for the solicitation of competitive sealed proposals. Solicitation of competitive sealed proposals for this project began on February 9, 2015. A total of seven (7) sets of construction documents were issued to general contractors, sub-contractors, and suppliers and a total of four (4) proposals were received on February 24, 2015.

Timeline for Solicitation of Competitive Sealed Proposals	
February 9, 2015	Solicitation of competitive sealed proposals. Seven (7) sets of construction documents were issued.
February 24, 2015	Four (4) proposals were received.

Staff evaluated these proposals and prepared the attached proposal summary. It is recommended that the top ranked contractor be recommended for Board approval.

Funds are available in the FY2014-2015 Renewals and Replacements budget for this project.

Source of Funding	Budget Available	Highest Ranked Proposal
Renewals & Replacements	\$35,000	\$31,336

It is requested that the Facilities Committee recommend for Board approval at the March 31, 2015 Board meeting, the contracting of construction services with Diaz Floors & Interiors in the amount of \$31,336 for the Pecan Campus Student Support Services Building Second Floor Re-Carpeting project as presented.

**SOUTH TEXAS COLLEGE
 PECAN CAMPUS STUDENT SERVICES BUILDING CARPET REPLACEMENT AT 2ND FLOOR
 PROJECT NO. 14-15-1050**

VENDOR	Diaz Floors & Interiors, Inc.	G & G Contractors	Imhoff Co, Inc. /dba Intertech Flooring	Lopez Carpets	Vintage Tile & Stone, LLC.
ADDRESS	1205 W Polk	5125 S Hwy 281	1301 Bus Park Dr Ste D	1326 W Alton Blvd	2020 W Nolana Ave
CITY/STATE	Pharr, TX 78577	Edinburg, TX 78539	Mission, TX 78572	Alton, TX 78573	McAllen, TX 78504
PHONE	956-787-0056	956-929-1567	956-584-3592	956-585-7515	956-631-8528
FAX	956-781-7917	956-283-7040	956-584-2149	956-585-8889	956-631-8526
CONTACT	Andres Diaz	Rene Garza	Vicente Garza	Santiago Lopez	Elizabeth Govea
#	Proposed	Proposed	Proposed	Proposed	Proposed
Project Proposed: PCN Campus Student Services Building Carpet Replacement at 2nd Floor	\$ 31,336.00	\$ 46,940.00	\$ 41,309.00	\$ 38,500.00	\$ 39,302.29
2 Begin Work Within	7-10 Working Days	10 Working Days	14 Working Days	30 Working Days	21 Working Days
3 Completion of Work Within	7-15 Calendar Days	60 Calendar Days	10 Calendar Days	5 Calendar Days	7 Calendar Days
TOTAL PROPOSAL AMOUNT	\$ 31,336.00	\$ 46,940.00	\$ 41,309.00	\$ 38,500.00	\$ 39,302.29
TOTAL RANKING POINTS	91.575	62.9	81.2	****	83.725
RANKING	1	4	3	****	2

****The proposer did not submitted the required bond therefore was not evaluated.

**SOUTH TEXAS COLLEGE
PECAN CAMPUS STUDENT SERVICES BUILDING CARPET REPLACEMENT AT 2ND FLOOR
PROJECT NO. 14-15-1050**

VENDOR		Diaz Floors & Interiors, Inc.		G & G Contractors		Imhoff Co, Inc. /dba Intertech Flooring		Vintage Tile & Stone, LLC.	
ADDRESS		1205 W Polk		5125 S Hwy 281		1301 Bus Park Dr Ste D		2020 W Nolana Ave	
CITY/STATE		Pharr, TX 78577		Edinburg, TX 78539		Mission, TX 78572		McAllen, TX 78504	
PHONE/FAX		956-787-0056		956-283-7030		956-584-3592		956-631-8528	
FAX		956-781-7917		956-283-7040		956-584-2149		956-631-8526	
CONTACT		Andres Diaz		Rene Garza		Vicente Garza		Elizabeth Govea	
1	The Respondent's price proposal. (up to 45 points)	45	45	30	30	34	34	35.9	35.9
		45		30		34		35.9	
		45		30		34		35.9	
		45		30		34		35.9	
2	The Respondent's experience and reputation. (up to 10 points)	9	8.75	7	7.25	9	9	8	8.375
		9		8		9		9	
		8		7		9		8.5	
		9		7		9		8	
3	The quality of the Respondent's goods or services. (up to 10 points)	9	8.625	8	6.75	9	9	9	8.7
		9		6		9		8.8	
		7.5		6		9		9	
		9		7		9		8	
4	The Respondent's safety record (up to 5 points)	4	3.875	3.5	2.875	4	4.075	4.5	4.375
		3.5		3		3.8		4	
		4		2		4		4	
		4		3		4.5		5	
5	The Respondent's proposed personal. (up to 8 points)	6.5	6.625	5	4.625	6.5	6.875	7.5	7.375
		7		5.5		7		8	
		6		4		7		7	
		7		4		7		7	
6	The Respondent's financial capability in relation to the size and the scope of the project. (up to 9 points)	8	7.5	5	5	6	6.125	8	7.75
		8		5		6.5		8	
		7		5		7		8	
		7		5		5		7	
7	The Respondent's organization and approach to the project. (up to 6 points)	3.5	4.5	4.5	4	4.5	5.125	4.5	5.25
		4.5		4.5		5		5.5	
		5		3		5		5	
		5		4		6		6	
8	The Respondent's time frame for completing the project. (up to 7 points)	6.7	6.7	2.4	2.4	7	7	6	6
		6.7		2.4		7		6	
		6.7		2.4		7		6	
		6.7		2.4		7		6	
TOTAL EVALUATION POINTS		91.575		62.9		81.2		83.725	
RANKING		1		4		3		2	

**Review and Recommend Action on Contracting Construction Services for
 Technology Campus West Academic Building Re-roofing**

Approval to select a contractor for the Technology Campus West Academic Building Re-roofing project will be requested at the March 31, 2015 Board meeting.

As part of the current fiscal year Facilities Deferred Maintenance Plan, facilities staff has included the replacement of the roof over the campus' original building. The existing roof has been in place seventeen years and has met its expected life cycle. Maintenance on the existing roof has surpassed normal levels and reoccurring leaks have become a concern. This proposed repair is not related to the hail storm. The Technology Campus building roofs were inspected for hail damage after the hail storm in March of 2012 and it was confirmed that the roof for Building B was not damaged by hail.

Included in the FY 2014-2015 renewals and replacements budget are funds for the re-roofing of the West Academic Building at the Technology Campus.

Amtech Building Sciences, Inc. has assisted STC staff in preparing and issuing the necessary plans and specifications for the solicitation of competitive sealed proposals. Solicitation of competitive sealed proposals for this project began on January 8, 2015. A total of seven (7) sets of construction documents were issued to general contractors, sub-contractors, and suppliers and a total of three (3) proposals were received on January 28, 2015.

Timeline for Solicitation of Competitive Sealed Proposals	
January 8, 2015	Solicitation of competitive sealed proposals began.
January 28, 2015	Three (3) proposals were received.

Staff evaluated these proposals and prepared the attached proposal summary. It is recommended that the top ranked contractor be recommended for Board approval.

Funds have been budgeted in the FY 2014-2015 Renewals and Replacements budget for this project.

Source of Funding	Amount Budgeted	Highest Ranked Proposal
Renewals & Replacements	\$1,698,900	\$1,296,000

It is requested that the Facilities Committee recommend for Board approval at the March 31, 2015 Board meeting, to contract construction services with Rio Roofing, Inc. in the amount of \$1,296,000 for the Technology Campus West Academic Building Re-roofing project as presented.

**SOUTH TEXAS COLLEGE
TECHNOLOGY CAMPUS WEST ACADEMIC BUILDING RE-ROOFING
PROJECT NO. 14-15-1042**

VENDOR	Rain King, Inc.	Rio Roofing, Inc.	Sechrist-Hall Company
ADDRESS	2006 Delmar	310 Hanmore Industrial Parkway	2826 W Expway 83
CITY/STATE/ZIP	Victoria, TX 77901	Harlingen, TX 78550	Harlingen, TX 78552
PHONE	361-576-0606	956-423-3359	956-423-7086
FAX	361-576-2089	956-423-3382	956-423-4700
CONTACT	Alan Cain	Thomas Gonzalez	Bill McBride
#	Description	Proposed	Proposed
1	Base Proposal: Technology Campus West Academic Building Re-Roofing	\$ 1,646,200.00	\$ 1,296,000.00
2	Begin Work Within	21 Working Days	14 Working Days
3	Completion of Work Within	180 Calendar Days	150 Calendar Days
TOTAL PROPOSAL AMOUNT		\$ 1,646,200.00	\$ 1,296,000.00
TOTAL RANKING POINTS		81.87	94.47
RANKING		3	1

**SOUTH TEXAS COLLEGE
TECHNOLOGY CAMPUS WEST ACADEMIC BUILDING RE-ROOFING
PROJECT NO. 14-15-1042**

VENDOR		Rain King, Inc.		Rio Roofing, Inc.		Sechrist-Hall Company	
ADDRESS		2006 Delmar		310 Hanmore Industrial Parkway		2826 W Expway 83	
CITY/STATE		Victoria, TX 77901		Harlingen, TX 78550		Harlingen, TX 78552	
PHONE/FAX		361-576-0606		956-423-3359		956-423-7086	
FAX		361-576-2089		956-423-3382		956-423-4700	
CONTACT		Alan Cain		Thomas Gonzalez		Bill McBride	
1	The Respondent's price proposal. (up to 45 points)	35.4	35.4	45	45	38.8	38.8
		35.4		45		38.8	
		35.4		45		38.8	
		35.4		45		38.8	
		35.4		45		38.8	
		35.4		45		38.8	
2	The Respondent's experience and reputation. (up to 10 points)	9	8.71	9	8.83	9	8.78
		9		8		9	
		8		9		8.5	
		8		8		8	
		8.5		9		8.5	
		9.8		10		9.7	
3	The quality of the Respondent's goods or services. (up to 10 points)	9	8.83	9	8.91	8.5	8.83
		9		9		9	
		8		8.5		9	
		8		8		8	
		9		9		8.5	
		10		10		10	
4	The Respondent's safety record (up to 5 points)	4.5	4.41	4.5	4.16	4	3.58
		5		3.5		3	
		4		4.5		4	
		4		3.5		3	
		5		4.5		3.5	
		4		4.5		4	
5	The Respondent's proposed personal. (up to 8 points)	7	6.16	7.5	7.16	7.5	7.08
		7		7		7	
		6		7		7	
		5		6		6	
		6		7.5		7	
		6		8		8	
6	The Respondent's financial capability in relation to the size and the scope of the project. (up to 9 points)	8	7.83	8	8	8.5	8.25
		9		8		9	
		7		8		8	
		6		7		7	
		8		8		8	
		9		9		9	

**SOUTH TEXAS COLLEGE
TECHNOLOGY CAMPUS WEST ACADEMIC BUILDING RE-ROOFING
PROJECT NO. 14-15-1042**

VENDOR		Rain King, Inc.		Rio Roofing, Inc.		Sechrist-Hall Company	
7	The Respondent's organization and approach to the project. (up to 6 points)	4.5	4.83	5.5	5.41	5.5	5.5
		5		5		6	
		4.5		5.5		5	
		5		5		5	
		5		5.5		5.5	
		5		6		6	
8	The Respondent's time frame for completing the project. (up to 7 points)	5.7	5.7	7	7	5.7	5.7
		5.7		7		5.7	
		5.7		7		5.7	
		5.7		7		5.7	
		5.7		7		5.7	
		5.7		7		5.7	
TOTAL EVALUATION POINTS		81.87		94.47		86.52	
RANKING		3		1		2	

**Review and Recommend Action on Substantial Completion of the Pecan
Campus Ann Richards Administration Building Grants/Accountability Office
Improvements**

Approval of substantial completion of the Pecan Campus Ann Richards Administration Building Grants/Accountability Office Improvements project will be requested at the March 31, 2015 Board meeting.

Architects with EGV Architects and STC staff visited the site and developed a construction punch list. As a result of this site visit and observation of the completed work, a Certificate of Substantial Completion for the project was certified on February 6, 2015. Substantial Completion was accomplished within the time allowed in the Owner/Contractor agreement for this project. A copy of the Substantial Completion Certificate is attached.

5 Star Construction will continue working on the punch list items identified and will have thirty (30) days to complete before final completion can be recommended for approval. It is anticipated that final acceptance of this project will be recommended for approval at the April 2015 Board meeting.

It is recommended that the Facilities Committee recommend for Board approval at the March 31, 2015 Board meeting, the substantial completion of the Pecan Campus Ann Richards Administration Building Grants/Accountability Office Improvements project as presented.

**AIA® Document G704™ – 2000****Certificate of Substantial Completion****PROJECT:***(Name and address)*Pecan Campus - Grants/Accountability
Office Improvements
3201 W. Pecan Ave.
McAllen, TX 78501**PROJECT NUMBER:** /**CONTRACT FOR:** General Construction**CONTRACT DATE:** August 11, 2014OWNER: ARCHITECT: CONTRACTOR: FIELD: OTHER: **TO OWNER:***(Name and address)*South Texas College
3201 W. Pecan Ave.
McAllen, TX 78501**TO CONTRACTOR:***(Name and address)*5 Star Construction
3209 Melody
Mission, TX 78574**PROJECT OR PORTION OF THE PROJECT DESIGNATED FOR PARTIAL OCCUPANCY OR USE SHALL INCLUDE:**

Entire project with the exception of the items listed on the punch list.

The Work performed under this Contract has been reviewed and found, to the Architect's best knowledge, information and belief, to be substantially complete. Substantial Completion is the stage in the progress of the Work when the Work or designated portion is sufficiently complete in accordance with the Contract Documents so that the Owner can occupy or utilize the Work for its intended use. The date of Substantial Completion of the Project or portion designated above is the date of issuance established by this Certificate, which is also the date of commencement of applicable warranties required by the Contract Documents, except as stated below:

Warranty**Date of Commencement**

February 6, 2015

EGV Architects, Inc.

ARCHITECT

BY

February 6, 2015

DATE OF ISSUANCE

A list of items to be completed or corrected is attached hereto. The failure to include any items on such list does not alter the responsibility of the Contractor to complete all Work in accordance with the Contract Documents. Unless otherwise agreed to in writing, the date of commencement of warranties for items on the attached list will be the date of issuance of the final Certificate of Payment or the date of final payment.

Cost estimate of Work that is incomplete or defective: \$3,000.00

The Contractor will complete or correct the Work on the list of items attached hereto within Thirty (30) days from the above date of Substantial Completion.

5 Star Construction

CONTRACTOR

BY

3-14-15

DATE

The Owner accepts the Work or designated portion as substantially complete and will assume full possession at 2:00 pm (time) on February 6, 2015 (date).

South Texas College

OWNER

BY

DATE

The responsibilities of the Owner and Contractor for security, maintenance, heat, utilities, damage to the Work and insurance shall be as follows:

(Note: Owner's and Contractor's legal and insurance counsel should determine and review insurance requirements and coverage.)

**Discussion and Action as Necessary Regarding STC vs Chubb Insurance for Hail
Damage Claim Settlement**

The Facilities Committee is asked to discuss with legal counsel and recommend action as necessary regarding legal settlement with Chubb Insurance for Hail Storm Damage insurance claim. Any recommended action will be presented for consideration by the South Texas College Board of Trustees at the March 31, 2015 Regular Board Meeting.

Update on Status of Non-Bond Construction Projects

The Facilities Planning & Construction staff prepared the attached design and construction update. This update summarized the status of each capital improvement project currently in progress. Gerry Rodriguez will be present to respond to questions and address concerns of the committee.

CONSTRUCTION PROJECTS PROGRESS REPORT - March 3, 2015

Project number	PROJECT DESCRIPTION	Project Development			Design Phase			Construction Phase			Project Manager	Architect/Engineer	Contractor			
		Project Development	Board approval of A/E	Contract Negotiations	Concept Development	Schematic Approval	30%	60%	95%	100%				Solicit of Proposals	Approve Contractor	Construction Start
Pecan Campus and Pecan Plaza																
13-1-001	Pecan - Monument signs										Gerry	TBD	TBD			
13-1-002	Pecan - Digital Marquee Sign										Rick	N/A	TBD			
14-1-012	Pecan - Annex Grant/Accountability Office Improvements										Robert	EGV Architects	5 Star Construction			
14-1-015	Pecan - Student Services Bldg Modifications										Rick	ERO Architects	Bullard Construction			
14-1-021	Pecan - Building A, G, D & X Electrical Disconnects										John	ACR Engineering	Metro Electric			
15-1-002	Pecan - Covered Area for Ceramic Arts Kilns										Robert	EGV Architects	TBD			
15-1-006	Pecan - Library Study Rooms Additions										Robert	Boulinghouse Simpson Gates Architects	TBD			
15-1-007	Pecan - Sports Field Lighting										John	DBR Engineering	TBD			
15-1-011	Pecan - Removal of existing trees for Bond projects										John	STC staff	Maldonado			
15-1-012	Pecan - Infrastructure for relocation of Portable Buildings										John	Meldden & Hunt	TBD			
15-1-013	Pecan - Relocation of Electrical Power Lines										Gerry	Sigma Engineering	TBD			
15-1-17	Pecan - Student Services Bldg. 1st Floor Modifications										Rick	Boulinghouse Simpson Gates Architects	TBD			
15-1-020	Pecan - AECHS Service Drive and Sidewalk Relocation										John	R. Gutierrez Engineering	TBD			
N/A	Pecan - H.S.I. Grant Training Lab C111 Improvements										John	N/A	STD Staff			
N/A	Pecan - Professional Development Office Improvements										Rick	N/A	STD Staff			
13-1-004	Pecan Plaza - Police Department Space Renovation										Rick	PBK Architects	5 Star Construction			
14-1-016	Pecan Plaza - Continuing Education Space Renovation										Robert	Boulinghouse Simpson Gates Architects	Alpha Building Corp.			
15-1-003	Pecan Plaza - Police Department Emergency Generator										Rick	Half Associates	TBD			
15-1-004	Pecan Plaza - Asphalt Resurfacing on Back Side										Rick	Half Associates	TBD			
Mid Valley Campus																
	None currently in progress															
Technology Campus																
14-3-R002	TC - West Academic Building Re-roofing										Robert	Amtech Building Sciences	TBD			
14-3-R006	TC - HVAC Cooling Tower Replacement										Rick	Half Associates	Pro-Tech			
15-3-R001	TC - Replacement of flooring in Building B										Robert	STC staff	Diaz Floors & Interiors			
Nursing and Allied Health Campus																
14-4-001	NAH - Parking Lot Expansion										John	Perez Consulting Engineers	Texas Cordia			
14-4-R004	NAH - Irrigation system upgrades										John	SSP Design	TBD			
14-4-005	NAH - Subdivision Plat										John	Perez Consulting Engineers	N/A			
15-4-022	NAH - Walls for Library Quiet Study Area										Rick	STC staff	Manufacture			
15-4-R001	NAH - Carpet Replacement II - West Wing (RR)										Robert	STC staff	Vintage Tile & Stone			
Starr County Campus																
14-5-003	Starr - Parking Lot 5 and South Drive Lighting										Rick	ACR Engineering	Zhiro Electric			
15-5-R01	Starr - Carpet Replacement Buildings A, B & C										John	N/A	Innertech Flooring			
District Wide Improvements																
14-6-010	DW - Building to Building ADA Accessibility Phase II										Robert	Damenbaum Engineering	TBD			
14-6-011	DW - Infrastructure for Fiber Optic Lines										Gerry	N/A	N/A			
14-6-011	DW - Parking Lots Lighting Upgrades to LED										Robert	DBR Engineering	TBD			
15-6-002	DW - Directional Signage										Rick	N/A	TBD			

For FY 2014-2015, 21 non-bond projects are currently in progress, 11 have been completed and 31 pending start up - 63 Total

Status of Non-Bond Construction Projects In Progress March 2015

Project	% Complete	Date to Complete	Current Activity	Budget	Contract Amount	Amount Paid	Balance
Pecan Campus							
Digital Marquee Sign	80%	March 2015	1. Project Development Phase 2. Vendor has completed preliminary design for review and approval by STC	\$80,000	TBD	\$0	TBD
Grant/Accountability Office Improvements	100%	January 2015	1. Construction Phase 2. Construction is complete	\$24,000	\$96,863.80	\$86,296.10	\$10,567.70
Student Services Building Offices Modifications	100%	January 2015	1. Construction Phase 2. Construction in complete	\$353,000	\$402,960.40	\$382,812.38	\$20,148.02
Buildings A, G, H, & X Electrical Disconnects	95%	March 2015	1. Construction Phase 2. Construction in progress 3. Installation was completed during Spring Break	\$100,000	\$101,121	\$2,343.65	\$98,777.35
Cover area for Ceramic Arts Kilns	30%	April 2015	1. Design phase 2. Design in progress	\$48,750	\$29,250	\$0	\$29,250
Removal of Trees for Bond Construction	100%	January 2015	1. Construction Phase 2. Construction in complete	\$25,000	\$20,271	\$20,271	\$0
Infrastructure for Relocation of Portable Buildings	100%	February 2015	1. Re-design Phase 2. Design work to reduce cost 3. Solicitation of construction proposals in progress	\$52,500	\$30,047.71	\$27,343.05	\$2,704.66
Relocation of Electrical Power Lines	20%	March 2015	1. Design phase 2. Contract negotiations complete 3. Design work in progress	\$11,250	TBD	\$0	TBD
Student Services Building 1 st Floor Modifications	5%	May 2015	1. Design Phase 2. Design in progress	\$37,500	TBD	\$0	TBD

Project	% Complete	Date to Complete	Current Activity	Budget	Contract Amount	Amount Paid	Balance
AECHS Service Drive and Sidewalk Relocation	60%	March 2015	1. Design phase 2. Design in progress	\$9,000	\$9,493	\$0	\$9,493
HSI Grant Training Lab C111 Improvements	100%	February 2015	1. Construction Phase 2. Construction complete	Grant	TBD	\$0	Grant
Professional Development Office Improvements	100%	February 2015	1. Construction Phase 2. Construction complete	\$10,000	TBD	TBD	\$10,000
Pecan Plaza Renovations for Police Department	100%	July 2014	1. Construction Phase 2. Construction in complete	\$1,200,000	\$904,143.45	\$904,143.45	\$0
Pecan Plaza Continuing Education Classrooms Improvements	100%	January 2015	1. Construction Phase 2. Construction in complete	\$170,000	\$187,471.35	\$187,471.35	\$0
Pecan Plaza Police Department Emergency Generator	30%	March 2015	1. Design phase 2. Design in progress	\$30,000	\$36,308.18	\$0	\$36,308.18
Pecan Plaza Asphalt Resurfacing on Alley Side	100%	March 2015	1. Design phase 2. Design complete 3. Solicitation of construction proposals in progress	\$8,000	\$9,885	\$0	\$9,885
Mid Valley Campus							
No Work in Progress							
Technology Campus							
West Academic Building Re-roofing	100%	January 2015	1. Design Phase 2. Design complete 3. Solicitation of proposal complete	\$125,000	\$106,181.25	\$75,000	\$31,681.25

Project	% Complete	Date to Complete	Current Activity	Budget	Contract Amount	Amount Paid	Balance
HVAC Cooling Tower Replacement	50%	March 2015	1. Construction Phase 2. Construction in progress	\$415,000	\$396,000	\$73,055.87	\$322,944.13
Replacement of Flooring in Building B	100%	January 2015	1. Construction Phase 2. Construction is complete	\$50,000	\$15,462.15	\$15,462.15	\$0
Nursing and Allied Health Campus							
Parking Expansion	30%	April 2015	1. Construction Phase 2. Contract executed 3. Construction in progress	\$740,000	\$655,545.80	\$70,018.80	\$585,527
Irrigation System upgrades	95%	February 2015	1. Design Phase 2. Design work in progress	\$5,000	\$3,550	\$0	\$3,550
Subdivision Plat for 6.63 Acres	95%	February 2015	1. Design Phase, 2. Staff is working with the engineer to finalize subdivision plat 3. Traffic Impact Analysis is complete 4. Pending approval of conditional use permit by City of McAllen	\$20,000	\$19,690	\$2,900	\$16,790
Walls for Library Quiet Study Area	95%	February 2015	1. Construction Phase 2. Installation of pre-fabricated walls is substantially complete	\$25,000	\$15,643.34	\$0	\$15,643.34
West Wing Re-carpeting	100%	January 2015	1. Construction phase 2. Construction complete	\$80,000	\$63,720.94	\$63,720.94	\$0
Starr County Campus							
Parking Lot and South Drive Lighting	100%	October 2014	1. Construction phase 2. Construction complete	\$100,000	\$98,500	\$98,500	\$0
Carpet replacement for Buildings A, B & C	100%	January 2015	1. Construction phase 2. Construction complete	\$75,000	\$22,196	\$22,196	\$0

Project	% Complete	Date to Complete	Current Activity	Budget	Contract Amount	Amount Paid	Balance
District Wide							
Building to Building ADA Accessibility Improvements Phase II	15%	April 2015	1. Design Phase 2. Design work is in progress	\$60,000	\$78,396.03	\$0	\$78,396.03
Parking Lots Lighting Upgrades to LED	100%	February 2015	1. Design phase 2. Design work complete 3. Solicitation of construction proposals is in progress	\$15,000	\$8,000	\$0	\$8,000
For FY 2014-2015, 21 non-bond projects are currently in progress, 9 have been completed and 33 pending start – Total 63							